



# GANG CHANNEL, VARIABLE COUNTERBORE, REPLACABLE NUT ELEMENT, 160,000 PSI, 450°F

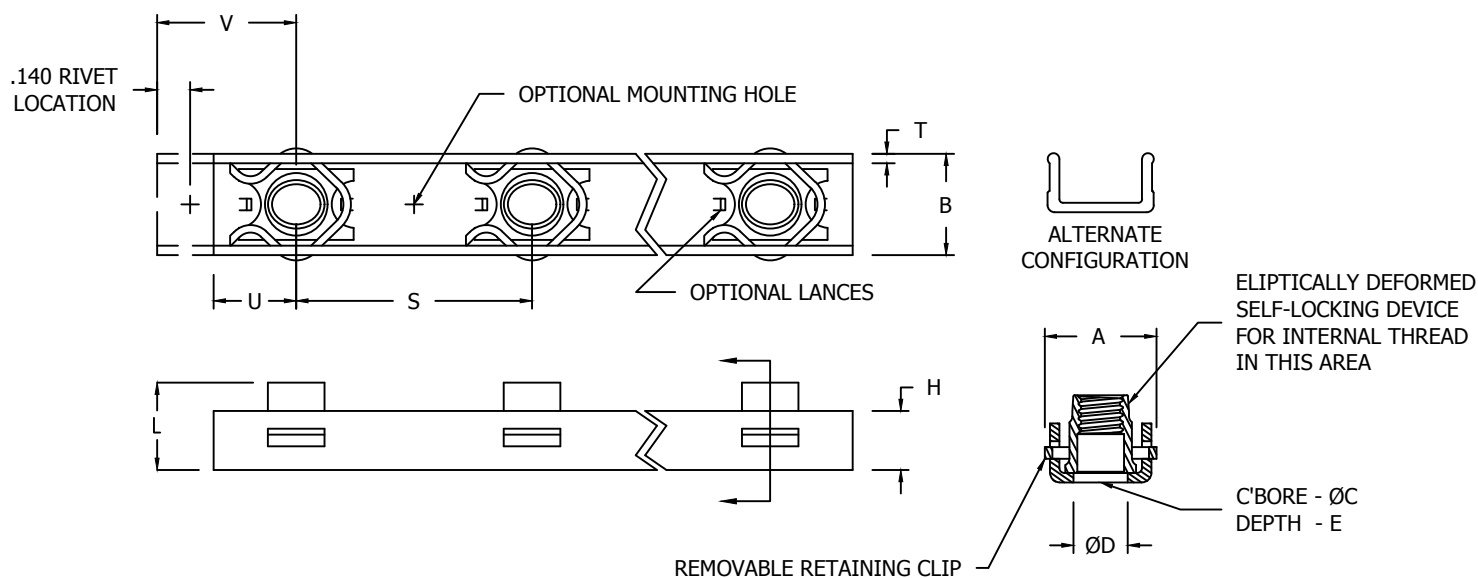


TABLE I - DIMENSIONS AND DASH NUMBERS

NAFCO PART NUMBER	THREAD (AS8879)	A REF	B MAX	ØC MIN	ØD ±.005	E MIN /6/	H REF	L MAX	T ±.005	U +.030 -.000	V +.030 -.000	PUSH OUT LB. MIN.	TORQUE OUT IN-LBS. MIN.
NA2067-1-02(-)	.1900-32 UNJF-3B	.474	.442	.194	.224	.070	.250	.250	.040	.350	.590	200	90
NA2067-2-02(-)						.125		.312					
NA2067-3-02(-)						.188		.375					
NA2067-4-02(-)						.250		.437					
NA2067-5-02(-)						.313		.500					
NA2067-6-02(-)						.375		.562					
NA2067-1-048(-)	.2500-28 UNJF-3B	.574	.532	.254	.285	.070	.298	.305	.040	.400	.640	225	160
NA2067-2-048(-)						.125		.357					
NA2067-3-048(-)						.188		.420					
NA2067-4-048(-)						.250		.482					
NA2067-5-048(-)						.313		.545					
NA2067-6-048(-)						.375		.607					
NA2067-1-054(-)	.3125-24 UNJF-3B	.710	.640	.317	.348	.070	.344	.370	.050	.450	.720	250	280
NA2067-2-054(-)						.125		.429					
NA2067-3-054(-)						.188		.492					
NA2067-4-054(-)						.250		.544					
NA2067-5-054(-)						.313		.617					
NA2067-6-054(-)						.375		.679					
NA2067-1-064(-)	.3750-24 UNJF-3B	.830	.733	.379	.410	.070	.380	.454	.062	.520	.790	250	420
NA2067-2-064(-)						.125		.509					
NA2067-3-064(-)						.188		.572					
NA2067-4-064(-)						.250		.634					
NA2067-5-064(-)						.313		.697					
NA2067-6-064(-)						.375		.759					
NA2067-1-070(-)	.4375-20 UNJF-3B	.960	.830	.442	.473	.070	.400	.592	.062	.570	.840	250	610
NA2067-2-070(-)						.125		.647					
NA2067-3-070(-)						.188		.710					
NA2067-4-070(-)						.250		.772					
NA2067-5-070(-)						.313		.835					
NA2067-6-070(-)						.375		.897					

CONFORMS TO:  
NASM25027  
AS8879

**NAFCO USA, LLC**  
CARSON CITY, NV 89706

PART NUMBER  
**NA2067**

FEDERAL SUPPLY CODE NO. 32387