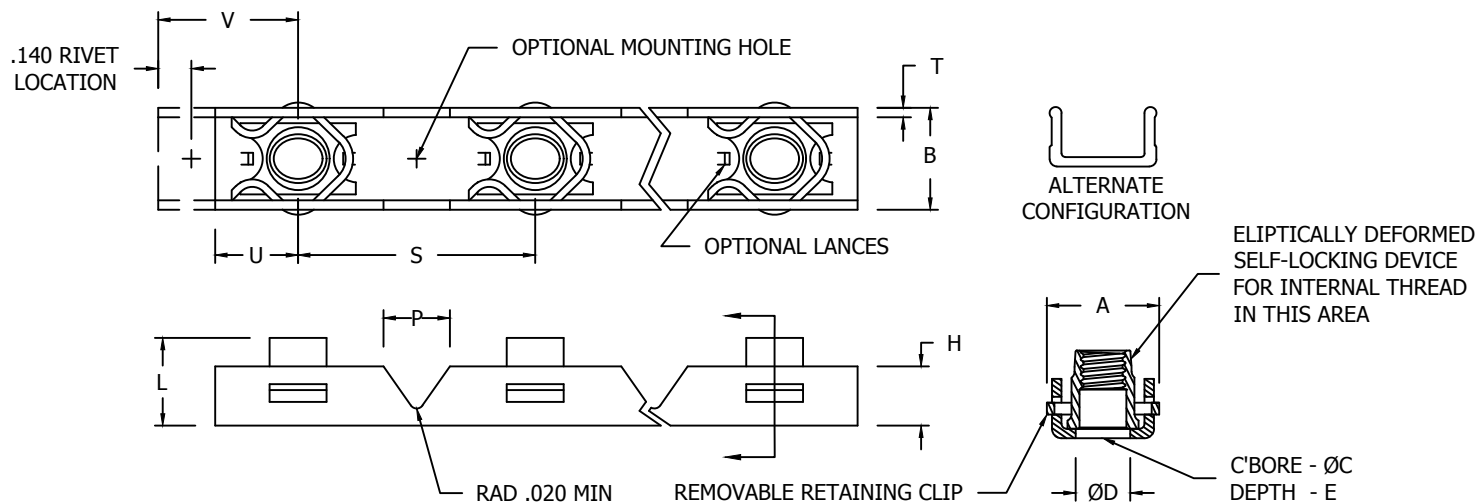




GANG CHANNEL, FLEXIBLE, VARIABLE C'BORE, REPLACABLE NUT ELEMENT, 160,000 PSI, 450°F



NAFCO PART NUMBER	THREAD T (AS8879)	A REF.	B MAX	ØC MIN	ØD ±.005	E MIN /6/	H REF	L MAX	P REF	T ±.005	U +.030 -.000	V +.030 -.000	PUSH OUT LBS. MIN
NA2112-1-02-()	.1900-32 UNJF-3B	.474	.442	.194	.224	.070	.250	.250	.225	.040	.350	.590	200
NA2112-2-02-()						.125		.312					
NA2112-3-02-()						.188		.375					
NA2112-4-02-()						.250		.437					
NA2112-5-02-()						.313		.500					
NA2112-6-02-()						.375		.562					
NA2112-1-048-()	.2500-28 UNJF-3B	.574	.532	.254	.285	.070	.298	.305	.285	.040	.400	.640	225
NA2112-2-048-()						.125		.357					
NA2112-3-048-()						.188		.420					
NA2112-4-048-()						.250		.482					
NA2112-5-048-()						.313		.545					
NA2112-6-048-()						.375		.607					
NA2112-1-054-()	.3125-24 UNJF-3B	.710	.640	.317	.348	.070	.344	.370	.343	.050	.450	.720	250
NA2112-2-054-()						.125		.429					
NA2112-3-054-()						.188		.492					
NA2112-4-054-()						.250		.544					
NA2112-5-054-()						.313		.617					
NA2112-6-054-()						.375		.679					

MATERIAL:

NUT - A286 CRES (UNS S66286) PER AMS5525, AMS5732 OR AMS5737.
CHANNEL - ALUMINUM ALLOY 7075-T6 OR 7075-T62 (UNS A97075) PER AMS-QQ-A-250/12.
RETAINING CLIP - XM-28 STAINLESS STEEL SPRING WIRE (UNS S24100) PER ASTM A313/A313M.

FINISH:

NUT - PASSIVATE PER AMS2700 PLUS NAFCO MOLYBDENUM DISULFIDE DRY FILM LUBRICANT.
CHANNEL - ANODIZE PER MIL-A-8625, TYPE II, CLASS 1 PLUS COAT WITH AMS-C-27725, TYPE II, GRADE 1 COATING PER NAFCO W18.5-06.
RETAINING CLIP - PASSIVATE PER AMS2700 METHOD 1 OR 2.

SERVICE TEMP.:

450°F.

PERFORMANCE:

NASM25027 EXCEPT FOR TORQUE-OUT AND PUSH-OUT, TENSILE 160,000 PSI AT BASIC PITCH DIAMETER (SEE APPROPRIATE TABLES). THESE VALUES APPLY BOTH SEPARATELY AND COMBINED. FOR PUSH-OUT TEST, RIVET SPACING OF A CORRESPONDING TWO-LUG ANCHOR NUT WILL BE APPLICABLE.

CONFORMS TO:

NASM25027
AS8879

NAFCO USA, LLC
CARSON CITY, NV 89706

PART NUMBER

NA2112

FEDERAL SUPPLY CODE NO. 32387