



JIFFYNUT

NUT, PLAIN, CLINCH AND NUT, SELF-LOCKING, CLINCH
(SELF-CLINCHING, KNURLED COLLAR,
FLOATING, 450°F AND 600°F)

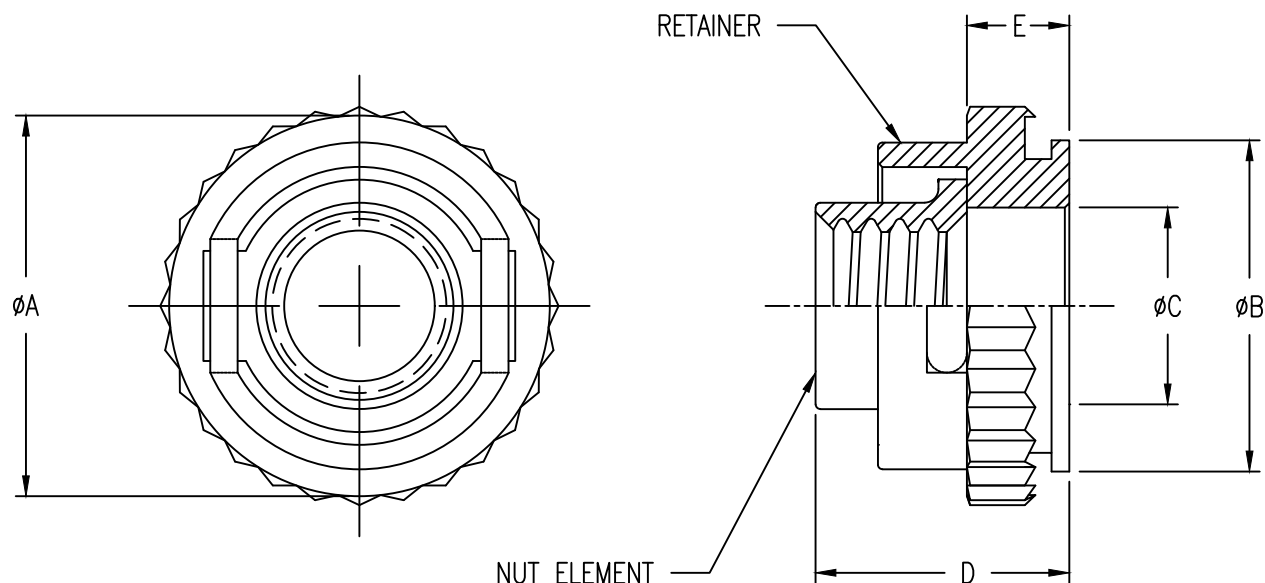


FIGURE 1- DIMENSIONS AND CONFIGURATION

TABLE I- DASH NUMBERS, PART DIMENSIONS AND INSTALLATION HOLE DIMENSIONS

| DASH NUMBERS | | THREAD AS8879 CLASS-3B | ØA ±.015 | ØB +.001 -.005 | ØC ±.005 | D MAX. | E ±.010 | SHEET THICKNESS MIN | HOLE SIZE IN SHEET +.004 -.001 |
|----------------------------|--------------------------|------------------------------|-----------------|----------------------|-----------------|---------------|----------------|---------------------------|---|
| ALLOY STEEL (450 °F) | CRES A286 (600 °F) | | | | | | | | |
| NA2364-40 | NA2364C-40 | .1120-40 UNJC-3B | .350 | .279 | .169 | .225 | .088 | .045 | .281 |
| NA2364-62 | NA2364C-62 | .1380-32 UNJC-3B | | | | | | | |
| NA2364-82 | NA2364C-82 | .1640-32 UNJC-3B | .450 | .373 | .218 | .275 | .115 | .060 | .375 |
| NA2364-02 | NA2364C-02 | .1900-32 UNJF-3B | | | | .295 | | | |
| NA2364-040 | NA2364C-040 | .2500-20 UNJC-3B | .560 | .498 | .281 | .365 | .141 | .090 | .500 |
| NA2364-048 | NA2364C-048 | .2500-28 UNJF-3B | | | | | | | |

MATERIAL: ALLOY STEEL FOR USE IN MATERIALS WITH A HARDNESS OF 28 HRC MAX.
CRES FOR USE IN MATERIALS WITH A HARDNESS OF 90 HRB MAX.
CRES, TYPE A286 (UNS S66286) PER AMS5731, AMS5732, AMS5734 OR AMS5737.

FINISH: ALLOY STEEL NUT AND RETAINER SHALL BE CADMIUM PLATED PER PROCUREMENT SPECIFICATION.
CRES NUT ELEMENT AND RETAINER SHALL BE CLEANED AND DESCALED PER PROCUREMENT SPECIFICATION.
SELF-LOCKING CRES NUT ELEMENT SHALL BE SILVER PLATED PER PROCUREMENT SPECIFICATION.

LUBRICATION: ALLOY STEEL NUT AND RETAINER: SOLID FILM LUBRICANT (SOLID FILM LUBRICANT ON RETAINER IS MANUFACTURER'S OPTION).
SELF-LOCKING CRES ELEMENT: SOLID FILM LUBRICANT.

CODE: CONSISTS OF THE LETTER "M", THE BASIC NUMBER OF THE SPECIFICATION SHEET, A DASH NUMBER TAKEN FROM TABLE I, AND THE LETTER "L" FOR SELF-LOCKING NUT OR LEAVE BLANK IF NON-LOCKING FEATURE.

EXAMPLE CALLOUT:

NA2364C - 040 L
 └───┬───┬───
 SELF-LOCKING
 DASH NUMBER
 BASIC PART NUMBER

SHEET 1 OF 2

CONFORMS TO:
NASM45938
AS8879

NAFCO USA, LLC
CARSON CITY, NV 89706

PART NUMBER
NA2364
FSC / CAGE CODE: 32387