



PRESSINSERT, SELF-LOCKING

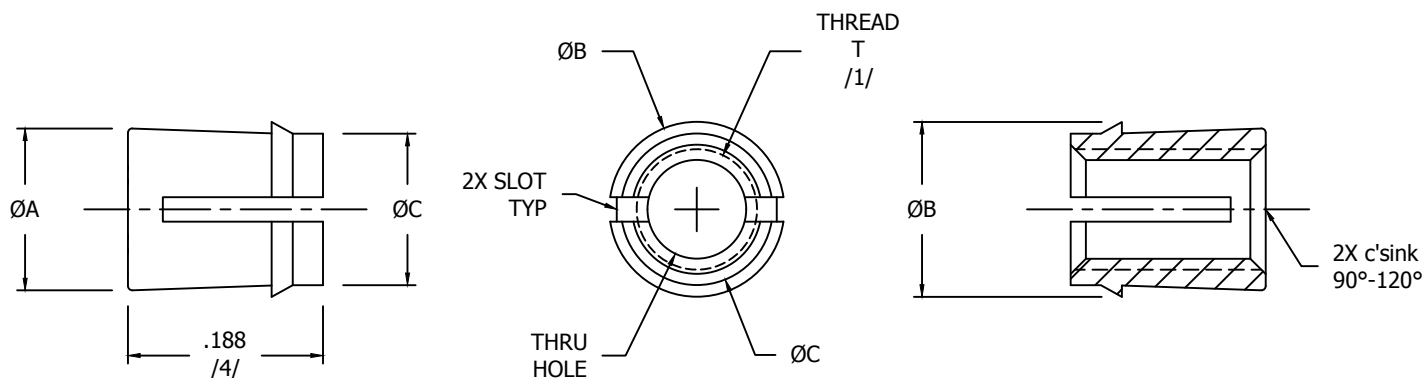


TABLE I - DIMENSIONS AND DASH NUMBERS

NAFCO DASH NUMBER	THREAD T (2B) (AS8879) /1/	ØA ±.010 /2/	ØB ±.004 /3/	ØC ±.010 /3/	STARTING HOLE SIZE /5/
NA12-26	.0860-56 UNJC-2B	.158	.185	.137	.161 (~20)
NA12-40	.1120-40 UNJC-2B	.184	.211	.163	.182 (~14)
NA12-62	.1380-32 UNJC-2B	.210	.237	.189	.205 (~5)
NA12-82	.1640-32 UNJC-2B	.236	.263	.215	.234 (15/64)
NA12-02	.1900-32 UNJF-2B	.263	.290	.242	.261 (G)
NA12-040	.2500-20 UNJC-2B	.330	.357	.309	.328 (21/64)
NA12-048	.2500-28 UNJF-2B	.330	.357	.309	.328 (21/64)

MATERIAL: 303 NON-MAGNETIC STAINLESS, ALUMINUM ALLOY, CARBON STEEL OR HALF-HARD BRASS. (SEE PROCUREMENT SPECIFICATION).

FINISH: CARBON STEEL -- CADMIUM PLATE PER AMS-QQ-P-416, TYPE I, CLASS 2 OR 3.
ALUMINUM -- NO FINISH.
BRASS -- NO FINISH.
STAINLESS -- NO FINISH.

APPLICATION: FOR USE IN LOW STRENGTH MATERIALS, SUCH AS PLASTICS WHERE ADDITIONAL TENSILE STRENGTH, LOCKING OF SCREW INTO THREADED JOINT, AND INCREASED RESISTANCE TO THREAD WEAR IS DESIRED.

VARIATIONS: OTHER FINISHES AVAILABLE UPON REQUEST. FOR VARIATIONS, USE SUFFIXES:
"CP" -- CADMIUM PLATE PER AMS-QQ-P-416, TYPE I, CLASS 2 OR 3.
"NF" -- NO FINISH.
"ZP" -- ZINC PLATE PER ASTM B633, TYPE II, Fe/Zn.
"A" -- ANODIZED PER MIL-A-8625, TYPE II, CLASS 1.
"SP" -- SILVER PLATE PER AMS 2410.

CONFORMS TO:
NASM25027
AS8879

NAFCO USA, LLC
CARSON CITY, NV 89706

PART NUMBER
NA12
FEDERAL SUPPLY CODE: 32387