

# PRESSINSERT, SELF-LOCKING

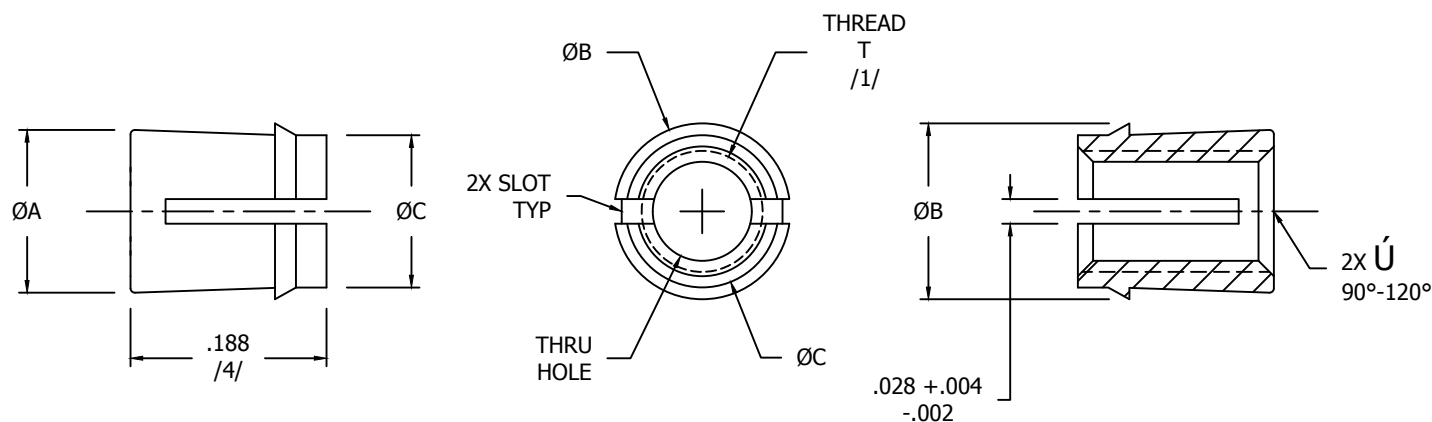


TABLE I - DIMENSIONS AND DASH NUMBERS

NAFCO DASH NUMBER	THREAD T (2B) (AS8879) /1/	$\text{ØA}$ $\pm .010$ /2/	$\text{ØB}$ $\pm .004$ /3/	$\text{ØC}$ $\pm .010$ /3/	STARTING HOLE SIZE /5/
NA12-26	.0860-56 UNJC-2B	.158	.185	.137	.161 (*20)
NA12-40	.1120-40 UNJC-2B	.184	.211	.163	.182 (*14)
NA12-62	.1380-32 UNJC-2B	.210	.237	.189	.205 (*5)
NA12-82	.1640-32 UNJC-2B	.236	.263	.215	.234 (15/64)
NA12-02	.1900-32 UNJF-2B	.263	.290	.242	.261 (G)
NA12-040	.2500-20 UNJC-2B	.330	.357	.309	.328 (21/64)
NA12-058	.3125-18 UNJC-2B	---	---	---	---
NA12-066	.3750-16 UNJC-2B	---	---	---	---

**MATERIAL:** 303 NON-MAGNETIC STAINLESS, ALUMINUM ALLOY, CARBON STEEL OR HALF-HARD BRASS.  
(SEE PROCUREMENT SPECIFICATION).

**FINISH:** CARBON STEEL -- CADMIUM PLATE PER AMS-QQ-P-416, TYPE I, CLASS 2 OR 3.  
ALUMINUM -- NO FINISH.  
BRASS -- NO FINISH.  
STAINLESS -- NO FINISH.

**APPLICATION:** FOR USE IN LOW STRENGTH MATERIALS, SUCH AS PLASTICS WHERE ADDITIONAL TENSILE STRENGTH, LOCKING OF SCREW INTO THREADED JOINT, AND INCREASED RESISTANCE TO THREAD WEAR IS DESIRED.

**VARIATIONS:** OTHER FINISHES AVAILABLE UPON REQUEST. FOR VARIATIONS, USE SUFFIXES:  
"CP" -- CADMIUM PLATE PER AMS-QQ-P-416, TYPE I, CLASS 2 OR 3.  
"NF" -- NO FINISH.  
"ZP" -- ZINC PLATE PER ASTM B633, TYPE II, Fe/Zn.  
"A" -- ANODIZED PER MIL-A-8625, TYPE II, CLASS 1.  
"SP" -- SILVER PLATE PER AMS 2410.

CONFORMS TO:  
NASM25027  
AS8879

**NAFCO USA, LLC**  
CARSON CITY, NV 89706

PART NUMBER  
**NA12**  
FEDERAL SUPPLY CODE: 32387