



JIFFYNUT

NUT, PLAIN, CLINCH AND NUT, SELF-LOCKING, CLINCH
(SELF-CLINCHING, KNURLED COLLAR, MINIATURE,
FLOATING, 450°F AND 600°F)

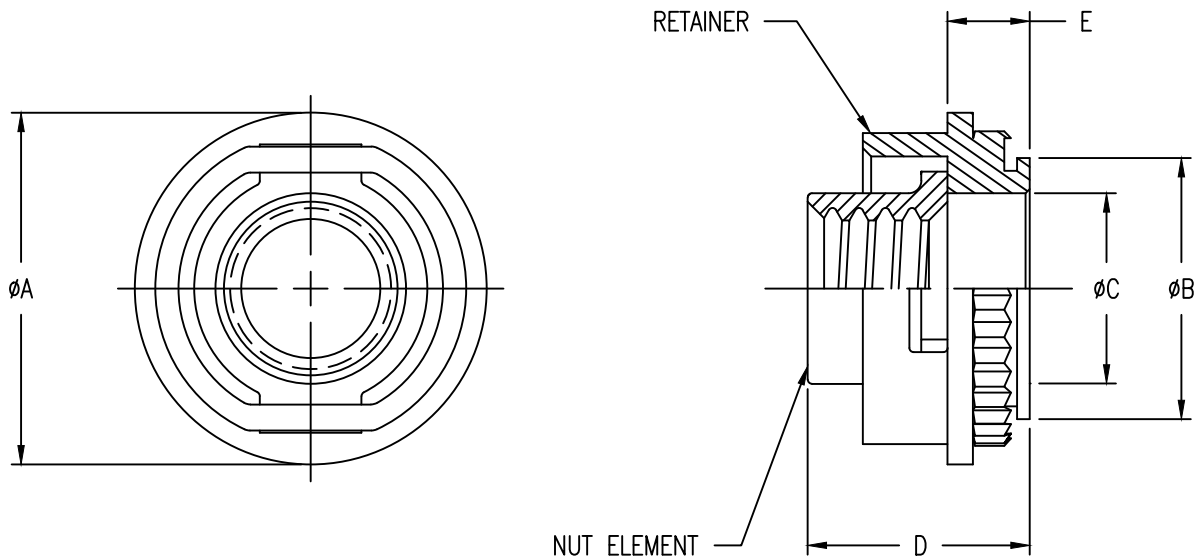


FIGURE 1- DIMENSIONS AND CONFIGURATION

TABLE I- DASH NUMBERS, PART DIMENSIONS AND INSTALLATION HOLE DIMENSIONS

DASH NUMBERS		THREAD AS8879 CLASS-3B	ØA ±.015	ØB +.001 -.005	ØC ±.005	D MAX.	E ±.010	SHEET THICKNESS MIN	HOLE SIZE IN SHEET +.004 -.001
ALLOY STEEL (450 °F)	CRES A286 (600 °F)								
NA1210-2	NA1210-2C	.1120-40 UNJC	.320	.248	.172	.224	.077	.040	.250
NA1210-3	NA1210-3C	.1380-32 UNJC							
NA1210-4	NA1210-4C	.1640-32 UNJC	.410	.310	.220	.265	.097	.040	.312
NA1210-5	NA1210-5C	.1900-32 UNJF				.285			
NA1210-6	NA1210-6C	.2500-20 UNJC	.500	.373	.281	.360	.145	.074	.375
NA1210-7	NA1210-7C	.2500-28 UNJF							

- MATERIAL:** ALLOY STEEL FOR USE IN MATERIALS WITH A HARDNESS OF 28 HRC MAX.
CRES FOR USE IN MATERIALS WITH A HARDNESS OF 90 HRB MAX.
CRES, TYPE A286 (UNS S66286) PER AMS5731, AMS5732, AMS5734 OR AMS5737.
- FINISH:** ALLOY STEEL NUT AND RETAINER SHALL BE CADMIUM PLATED PER PROCUREMENT SPECIFICATION.
SELF-LOCKING CRES ELEMENT SHALL BE SILVER PLATED PER PROCUREMENT SPECIFICATION.
- LUBRICATION:** ALLOY STEEL NUT AND RETAINER: SOLID FILM LUBRICANT (SOLID FILM LUBRICANT ON RETAINER IS MANUFACTURER'S OPTION).
SELF-LOCKING CRES ELEMENT: SOLID FILM LUBRICANT.
- CODE:** CONSISTS OF THE LETTER "M", THE BASIC NUMBER OF THE SPECIFICATION SHEET, A DASH NUMBER
TAKEN FROM TABLE I, AND THE LETTER "L" FOR SELF-LOCKING NUT OR LEAVE BLANK IF NON-
LOCKING FEATURE.

EXAMPLE CALLOUT: = NUT, MINIATURE, FLOATING, SELF-CLINCHING, CRES TYPE A286,
.1120-40 UNJC INTERNAL THREAD SIZE, AND WITH A SELF-LOCKING
FEATURE.

NA1210-2C L

- SELF-LOCKING
- DASH NUMBER
- BASIC PART NUMBER

CONFORMS TO:
NASM45938
AS8879

NAFCO USA, LLC
CARSON CITY, NV 89706

PART NUMBER
NA1210
FSC / CAGE CODE: 32387