

# JIFFYNUT

NUT, PLAIN, CLINCH AND NUT, SELF-LOCKING, CLINCH  
(SELF-CLINCHING, KNURLED COLLAR, MINIATURE,  
FLOATING, 450°F AND 600°F)

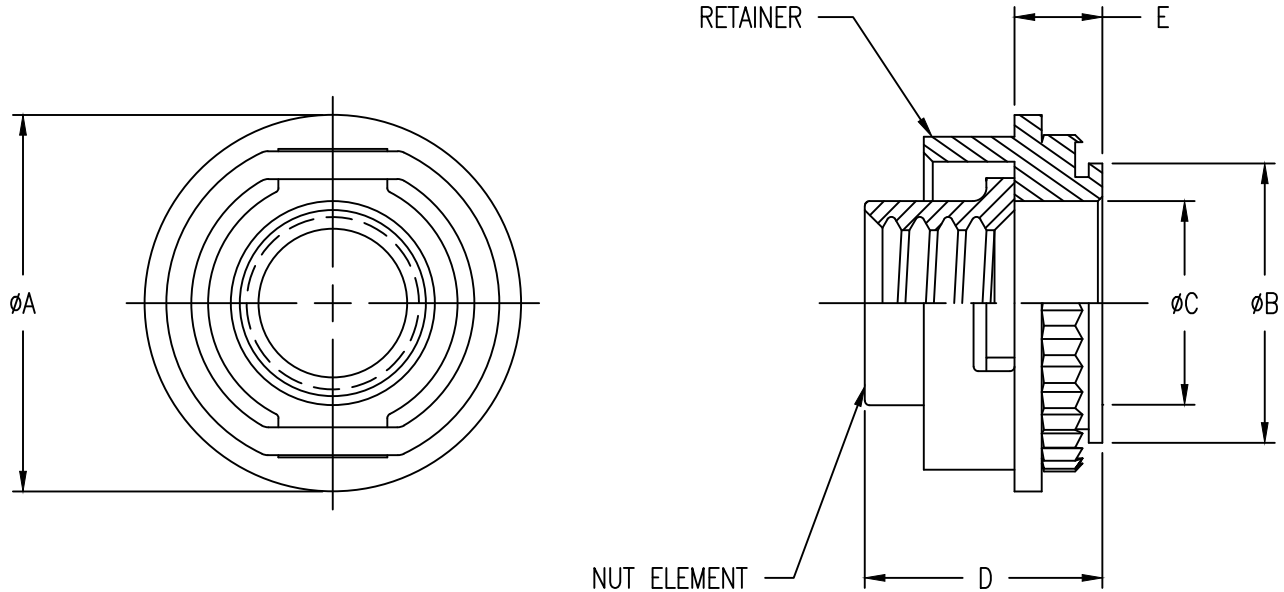


FIGURE 1- DIMENSIONS AND CONFIGURATION

TABLE I- DASH NUMBERS, PART DIMENSIONS AND INSTALLATION HOLE DIMENSIONS

DASH NUMBERS		THREAD AS8879 CLASS-3B	ØA ±.015	ØB +.001 -.005	ØC ±.005	D MAX.	E ±.010	SHEET THICKNESS MIN	HOLE SIZE IN SHEET +.004 -.001
ALLOY STEEL (450 °F)	CRES A286 (600 °F)								
NA1210-26	NA1210-26C	.0860-56 UNJC-3B	.320	.248	.172	.224	.077	.040	.250
NA1210-40	NA1210-40C	.1120-40 UNJC-3B							
NA1210-62	NA1210-62C	.1380-32 UNJC-3B							
NA1210-82	NA1210-82C	.1640-32 UNJC-3B	.410	.310	.220	.265	.097	.040	.312
NA1210-02	NA1210-02C	.1900-32 UNJF-3B				.285			
NA1210-040	NA1210-040C	.2500-20 UNJC-3B	.500	.373	.281	.360	.145	.074	.375
NA1210-048	NA1210-048C	.2500-28 UNJF-3B							

**MATERIAL:** ALLOY STEEL FOR USE IN MATERIALS WITH A HARDNESS OF 28 HRC MAX.  
CRES FOR USE IN MATERIALS WITH A HARDNESS OF 90 HRB MAX.  
CRES, TYPE A286 (UNS S66286) PER AMS5731, AMS5732, AMS5734 OR AMS5737.

**FINISH:** ALLOY STEEL NUT AND RETAINER SHALL BE CADMIUM PLATED TYPE II, CLASS 3 (NO CODE) OR CADMIUM PLATED TYPE III, CLASS 3 (TYIII CODE).  
SELF-LOCKING CRES ELEMENT SHALL BE SILVER PLATED PER PROCUREMENT SPECIFICATION.

**LUBRICATION:** ALLOY STEEL NUT AND RETAINER: SOLID FILM LUBRICANT (SOLID FILM LUBRICANT ON RETAINER IS MANUFACTURER'S OPTION).  
SELF-LOCKING CRES ELEMENT: SOLID FILM LUBRICANT.

**CODE:** CONSISTS OF THE LETTER "M", THE BASIC NUMBER OF THE SPECIFICATION SHEET, A DASH NUMBER  
TAKEN FROM TABLE I, AND THE LETTER "L" FOR SELF-LOCKING NUT OR LEAVE BLANK IF NON-  
LOCKING FEATURE.

**EXAMPLE CALLOUT:** = NUT, MINIATURE, FLOATING, SELF-CLINCHING, CRES TYPE A286,  
.1120-40 UNJC INTERNAL THREAD SIZE, AND WITH A SELF-LOCKING  
FEATURE.

**NA1210-2C L**

- SELF-LOCKING
- DASH NUMBER
- BASIC PART NUMBER

**MFPN EQUIVALENT  
EXAMPLE CALLOUT:** = NUT, MINIATURE, FLOATING, SELF-CLINCHING, STEEL,  
.1120-40 UNJC INTERNAL THREAD SIZE, AND WITH A SELF-LOCKING  
FEATURE, EQUIVALENT TO MFPN4-40SCL REVISION 11-3-94.

**NA1210-2LYIII**

- CADMIUM TYPE III, CLAS 3
- DASH NUMBER, SELF-LOCKING
- BASIC PART NUMBER

SHEET 1 OF 2

CONFORMS TO:  
NASM45938  
AS8879

# NAFCO USA, LLC

CARSON CITY, NV 89706

PART NUMBER

## NA1210

FSC / CAGE CODE: 32387