



NUT ELEMENT, CLIP RETAINED, VARIABLE COUNTERBORE, 160 KSI

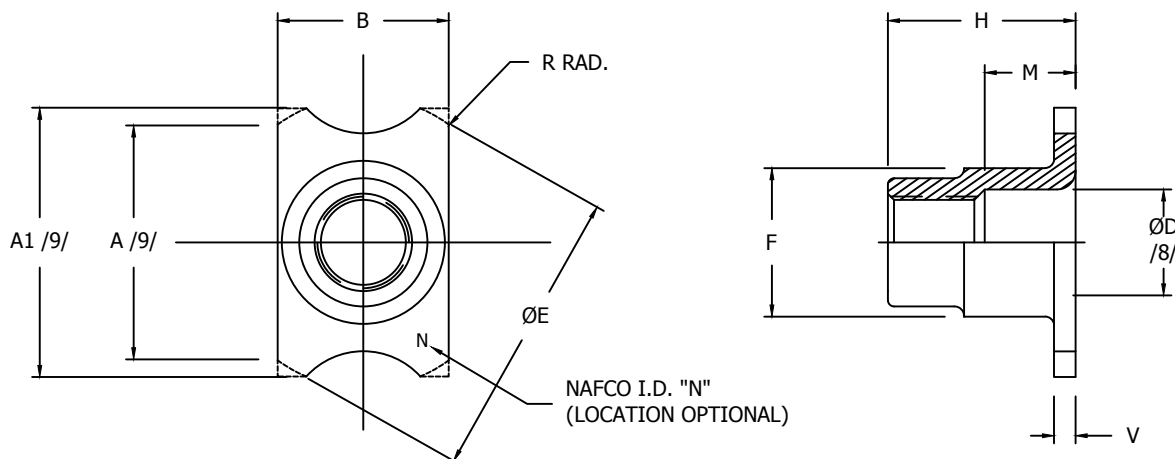


TABLE I - DIMENSIONS AND DASH NUMBERS

NAFCO DASH NUMBER	THREAD (AS8879)	A1	A	B ±.008	ØD MIN	ØE	ØF MAX	R RAD REF.	V +.010 -.005	H MAX	M MIN	OVERSIZE C'BORE	
												X(1ST) D*MIN	Y(2ND) D**MIN
NA2073-02-1	.1900-32 UNJF-3B	.485	.441	.300	.194	.500	.271	.015	.033	.202	.025	.210	.225
NA2073-02-2										.267	.077		
NA2073-02-3										.330	.140		
NA2073-02-4										.392	.202		
NA2073-02-5										.455	.265		
NA2073-02-6										.517	.327		
NA2073-048-1	.2500-28 UNJF-3B	.605	.585	.400	.254	.625	.350	.015	.045	.257	.022	.271	.286
NA2073-048-2										.312	.077		
NA2073-048-3										.375	.140		
NA2073-048-4										.437	.200		
NA2073-048-5										.500	.265		
NA2073-048-6										.562	.327		
NA2073-054-1	.3125-24 UNJF-3B	.726	.667	.490	.317	.750	.440	.015	.055	.360	.020	.333	.348
NA2073-054-2										.415	.075		
NA2073-054-3										.480	.135		
NA2073-054-4										.540	.200		
NA2073-054-5										.605	.260		
NA2073-054-6										.670	.320		
NA2073-064-1	.3750-24 UNJF-3B	.735	.781	.550	.379	.875	.526	.015	.075 MAX	.381	---	.395	.410
NA2073-064-2										.436	.057		
NA2073-064-3										.499	.120		
NA2073-064-4										.561	.180		
NA2073-064-5										.624	.245		
NA2073-064-6										.686	.305		
NA2073-070-1	.4375-20 UNJF-3B	.845	1.010	.656	.442	1.125	.610	.015	.078	.519	---	.458	.473
NA2073-070-2										.574	.055		
NA2073-070-3										.637	.120		
NA2073-070-4										.699	.180		
NA2073-070-5										.762	.245		
NA2073-070-6										.824	.305		
NA2073-080-1	.5000-20 UNJF-3B	.945	1.157	.750	.504	1.250	.671	.015	.100 MAX	.595	---	.520	.535
NA2073-080-2										.650	.047		
NA2073-080-3										.710	.110		
NA2073-080-4										.775	.180		
NA2073-080-5										.835	.245		
NA2073-080-6										.890	.305		

CONFORMS TO:
NASM25027
AS8879

NAFCO USA, LLC
CARSON CITY, NV 89706

PART NUMBER
NA2073
FEDERAL SUPPLY CODE: 32387