



NUT, CAPPED, CORNER, VARIABLE COUNTERBORE, FIXED, 160,000 PSI

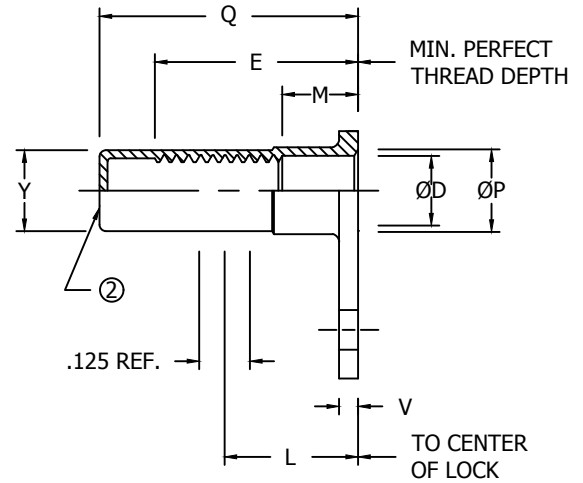
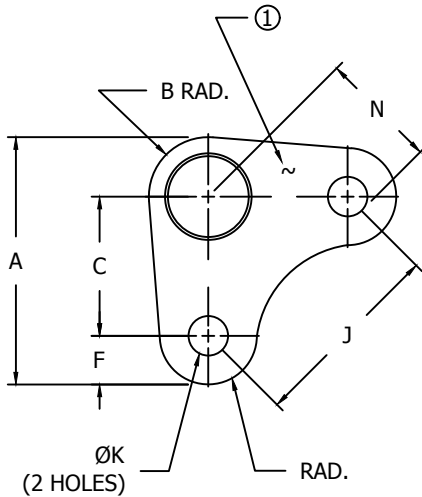


TABLE I - DIMENSIONS AND DASH NUMBERS

NAFCO PART NUMBER	THREAD AS8879	A MAX	B REF.	C ±.005	ØD MIN	E MIN	F MIN	J ±.002	ØK +.005 - .000	L REF.	M +.010 - .000	N MAX	ØP MAX	Q +.020 - .010	V MAX	Y MAX	AXIAL TENSILE STRENGTH LBS. MIN.	APPROX. WT. LBS./100
NA2134-40-1	.1120-40 UNJC-3B	.611	.130	.344	.116	.312	.120	.486	.098	.170	.062	.235	.155	.432	.047	.150	960	.33
NA2134-40-2						.375				.235	.125			.495				.35
NA2134-40-3						.437				.295	.187			.557				.37
NA2134-40-4						.500				.360	.260			.620				.39
NA2134-40-5						.562				.420	.312			.682				.41
NA2134-62-1	.1380-32 UNJC-3B	.611	.130	.344	.142	.374	.120	.486	.098	.210	.062	.235	.206	.514	.047	.200	1,450	.47
NA2134-62-2						.437				.270	.125			.577				.49
NA2134-62-3						.499				.330	.187			.639				.52
NA2134-62-4						.562				.390	.260			.702				.54
NA2134-62-5						.624				.450	.312			.764				.57
NA2134-82-1	.1640-32 UNJC-3B	.637	.146	.344	.168	.390	.135	.486	.098	.210	.062	.265	.248	.560	.047	.235	2,240	.70
NA2134-82-2						.440				.270	.125			.610				.75
NA2134-82-3						.510				.330	.187			.680				.81
NA2134-82-4						.570				.390	.260			.740				.86
NA2134-82-5						.640				.450	.312			.810				.92
NA2134-02-1	.1900-32 UNJF-3B	.653	.162	.344	.194	.390	.140	.486	.098	.210	.062	.270	.274	.560	.047	.235	3,180	.60
NA2134-02-2						.440				.270	.125			.610				.64
NA2134-02-3						.510				.330	.187			.680				.68
NA2134-02-4						.570				.390	.260			.740				.72
NA2134-02-5						.640				.450	.312			.810				.76
NA2134-048-1	.2500-28 UNJF-3B	.852	.205	.500	.254	.430	.140	.707	.098	.220	.062	.293	.344	.615	.055	.310	5,820	1.07
NA2134-048-2						.490				.280	.125			.675				1.15
NA2134-048-3						.560				.340	.187			.745				1.23
NA2134-048-4						.620				.400	.260			.805				1.31
NA2134-048-5						.680				.460	.312			.865				1.39
NA2134-054-1	.3125-24 UNJF-3B	.902	.246	.500	.317	.500	.140	.707	.130	.250	.062	.307	.417	.750	.065	.425	9,260	2.11
NA2134-054-2						.562				.312	.125			.812				2.21
NA2134-054-3						.625				.375	.187			.875				2.31
NA2134-054-4						.687				.437	.260			.937				2.41
NA2134-054-5						.750				.500	.312			1.000				2.51
NA2134-064-1	.3750-24 UNJF-3B	.956	.304	.500	.379	.500	.140	.707	.130	.250	.062	.330	.505	.775	.075	.515	14,000	2.99
NA2134-064-2						.562				.312	.125			.837				3.14
NA2134-064-3						.625				.375	.187			.900				3.29
NA2134-064-4						.687				.437	.260			.962				3.44
NA2134-064-5						.750				.500	.312			1.025				3.59

CONFORMS TO:
MIL-S-8879
NASM25027
EXCEPT AXIAL
TENSILE STRENGTH

NAFCO USA, LLC

CARSON CITY, NV 89706

PART NUMBER

NA2134

FSC/CAGE CODE: 32387

20230619-2042