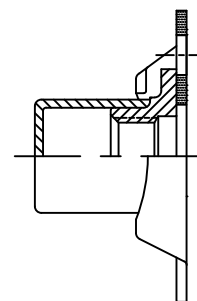
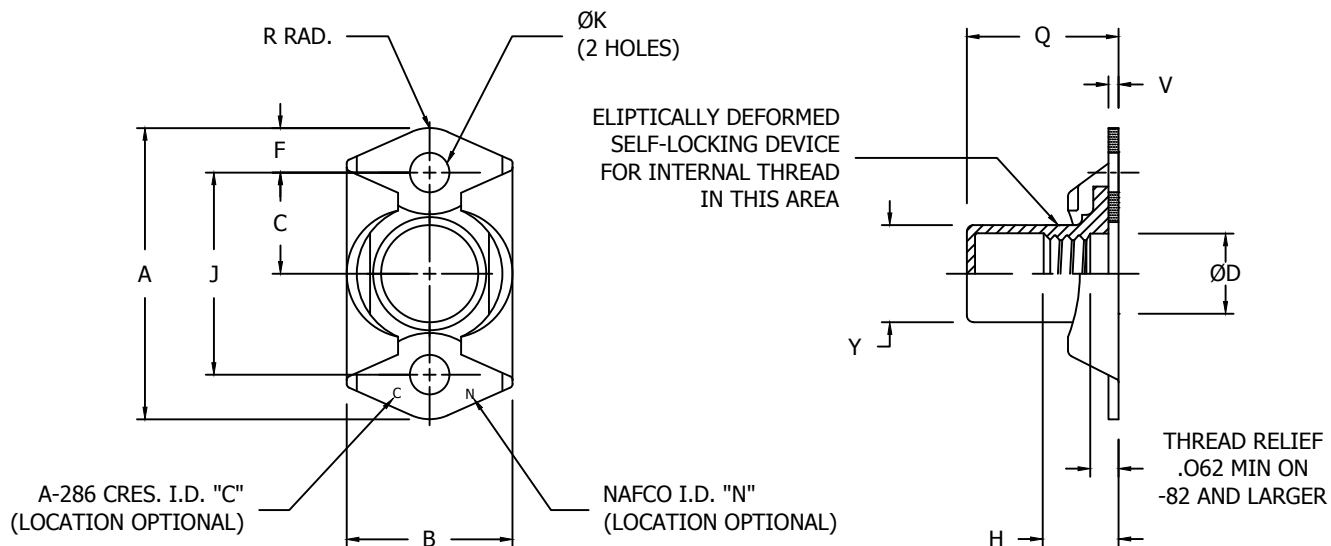


# NUT, ANCHOR, MINIATURE, TWO LUG, FLOATING, CAPPED, 125,000 PSI



ALTERNATE CONFIGURATION

TABLE I - DIMENSIONS AND DASH NUMBERS

NAFCO PART NUMBER		THREAD AS8879	A MAX	B MAX	C ±.005	ØD MIN	F MIN	H MAX	J ±.002	K +.005 -.000	Q +.020 -.010	V MAX	Y MAX	APPROX WEIGHT LBS./100
STEEL 450°F	CRES 900°F													
NA2140-40K	NA2140C-40K	.1120-40 UNJC-3B	.545	.357	.172	---	.075	.153	.343	.066	.325	.032	.198	.15
NA2140-40K1	NA2140C-40K1										.211			.12
NA2140-62K	NA2140C-62K	.1380-32 UNJC-3B	.707	.367	.234	---	.100	.171	.468	.098	.518	.032	.228	.26
NA2140-62K1	NA2140C-62K1										.377			.22
NA2140-82K	NA2140C-82K	.1640-32 UNJC-3B	.707	.367	.234	.168	.100	.250	.468	.098	.518	.032	.252	.36
NA2140-82K1	NA2140C-82K1										.377			.30
NA2140-02K	NA2140C-02K	.1900-32 UNJF-3B	.739	.416	.250	.194	.100	.250	.500	.098	.518	.032	.280	.39
NA2140-02K1	NA2140C-02K1										.377			.35
NA2140-048K	NA2140C-048K	.2500-28 UNJF-3B	.801	.500	.281	.254	.100	.281	.562	.098	.549	.032	.347	.87
NA2140-048K1	NA2140C-048K1										.440			.81

CONFORMS TO:  
NASM25027  
AS8879

**NAFCO USA, LLC**  
CARSON CITY, NV 89706

PART NUMBER  
**NA2140**  
FEDERAL SUPPLY CODE: 32387