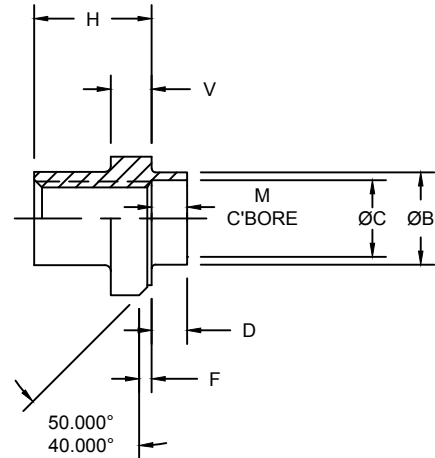
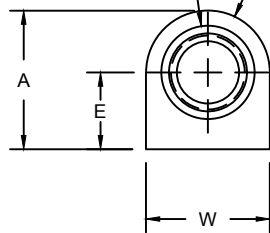


NUT, SELF-LOCKING, SHANK

UPPER THREADED PORTION
ELLIPTICALLY DEFORMED



NAFCO PART NUMBER	THREAD (AS8879)	A	B	C	D ±.003	E	F ±.005	H	M ±.015	V	W
NA2442-02-1	.1900-32 UNJF-3B	.359	.239	.200	.071	.200	.050	.262	.071	.110	.321
NA2442-02-2		.353	.235	.195	.091	.194	.032	.247	.091	.100	.315

MATERIAL: A286 CRES PER AMS5732 OR AMS5735.

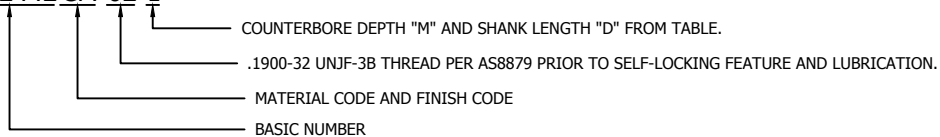
FINISH: PASSIVATE PER AMS2700 PLUS MOLYBDENUM DISULFIDE DRY FILM LUBRICANT.

TEMP.: TO 850°F.

CODE: "C" FOLLOWING BASIC NUMBER INDICATES A286 CRES MATERIAL.
"M" FOLLOWING "C" CODE INDICATES DRI-FILM LUBRICANT.

EXAMPLE CALLOUT:

NA2442 CM-02-1



NOTES:

- ALL DIMENSIONS IN INCHES AND APPLY AFTER FINISH AND PRIOR TO THE APPLICATION OF LUBRICATION UNLESS OTHERWISE SPECIFIED.
- THREADS SHALL BE IN ACCORDANCE WITH AS8879. THE UPPER THREADED PORTION OF THE NUT SHALL BE DEFORMED TO PROVIDE SELF-LOCKING FEATURE.
- SAMPLE FLOURESCENT PENETRANT INSPECT PER ASTM E1417.
- FOR USE WITH BOLTS WITH STANDARD THREAD PITCH DIAMETERS.

CONFORMS TO:

NASM25027
AS8879

NAFCO USA, LLC

CARSON CITY, NV 89706

PART NUMBER

NA2442

FSC/CAGE CODE: 32387