

# PRESSINSERT, SELF-LOCKING

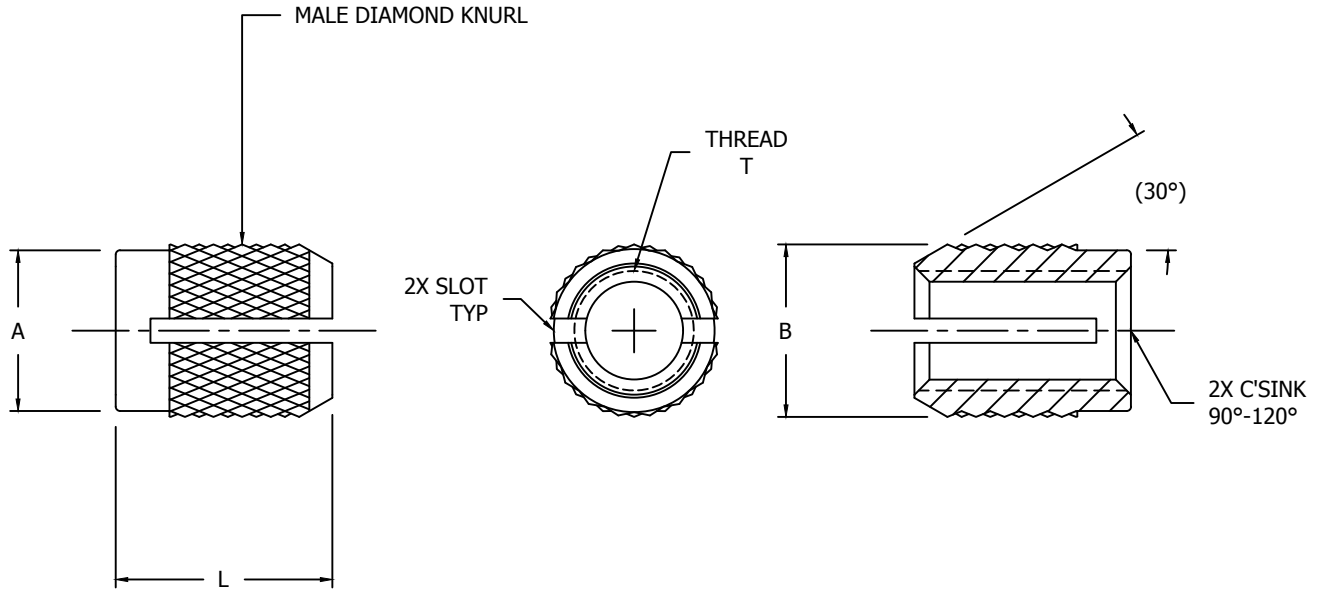


TABLE I - DIMENSIONS AND DASH NUMBERS

NAFCO DASH NUMBER	THREAD T (2B) (AS8879)	A ±.010	B ±.004 /2/	L ±.010 /3/	STARTING HOLE SIZE /4/
NA41-26	.0860-56 UNJC-2B	.125	.135	.156	.125 (1/8)
NA41-40	.1120-40 UNJC-2B	.156	.166	.188	.156 (5/32)
NA41-62	.1380-32 UNJC-2B	.187	.199	.250	.188 (3/16)
NA41-82	.1640-32 UNJC-2B	.218	.230	.313	.219 (7/32)
NA41-02	.1900-32 UNJF-2B	.250	.262	.375	.250 (1/4)
NA41-040	.2500-20 UNJC-2B	.312	.326	.500	.313 (5/16)
NA41-058	.3125-18 UNJC-2B	.375	.389	.563	.375 (3/8)
NA41-066	.3750-16 UNJC-2B	.437	.451	.625	.438 (7/16)

**MATERIAL:** 303 CRES, ALUMINUM ALLOY, CARBON STEEL OR HALF-HARD BRASS.

**FINISH:** CARBON STEEL -- CADMIUM PLATE PER AMS-QQ-P-416, TYPE I, CLASS 2 OR 3.  
 ALUMINUM -- NO FINISH.  
 BRASS -- NO FINISH.  
 CRES -- PASSIVATED PER ASTM A967 OR AMS2700.

**APPLICATION:** FOR USE IN LOW STRENGTH MATERIALS, SUCH AS PLASTICS WHERE ADDITIONAL TENSILE STRENGTH, LOCKING OF SCREW INTO THREADED JOINT, AND INCREASED RESISTANCE TO THREAD WEAR IS DESIRED.

**VARIATIONS:** OTHER FINISHES AVAILABLE UPON REQUEST. FOR VARIATIONS, USE SUFFIXES:  
 "CP" -- CADMIUM PLATE PER AMS-QQ-P-416, TYPE I, CLASS 2 OR 3.  
 "NF" -- NO FINISH.  
 "ZP" -- ZINC PLATE PER ASTM B633, TYPE II, Fe/Zn.  
 "A" -- ANODIZED PER MIL-A-8625, TYPE II, CLASS 1.  
 "SP" -- SILVER PLATE PER AMS 2410.

CONFORMS TO:

AS8879

# NAFCO USA, LLC

CARSON CITY, NV 89706

PART NUMBER

# NA41

FSC / CAGE CODE: 32387