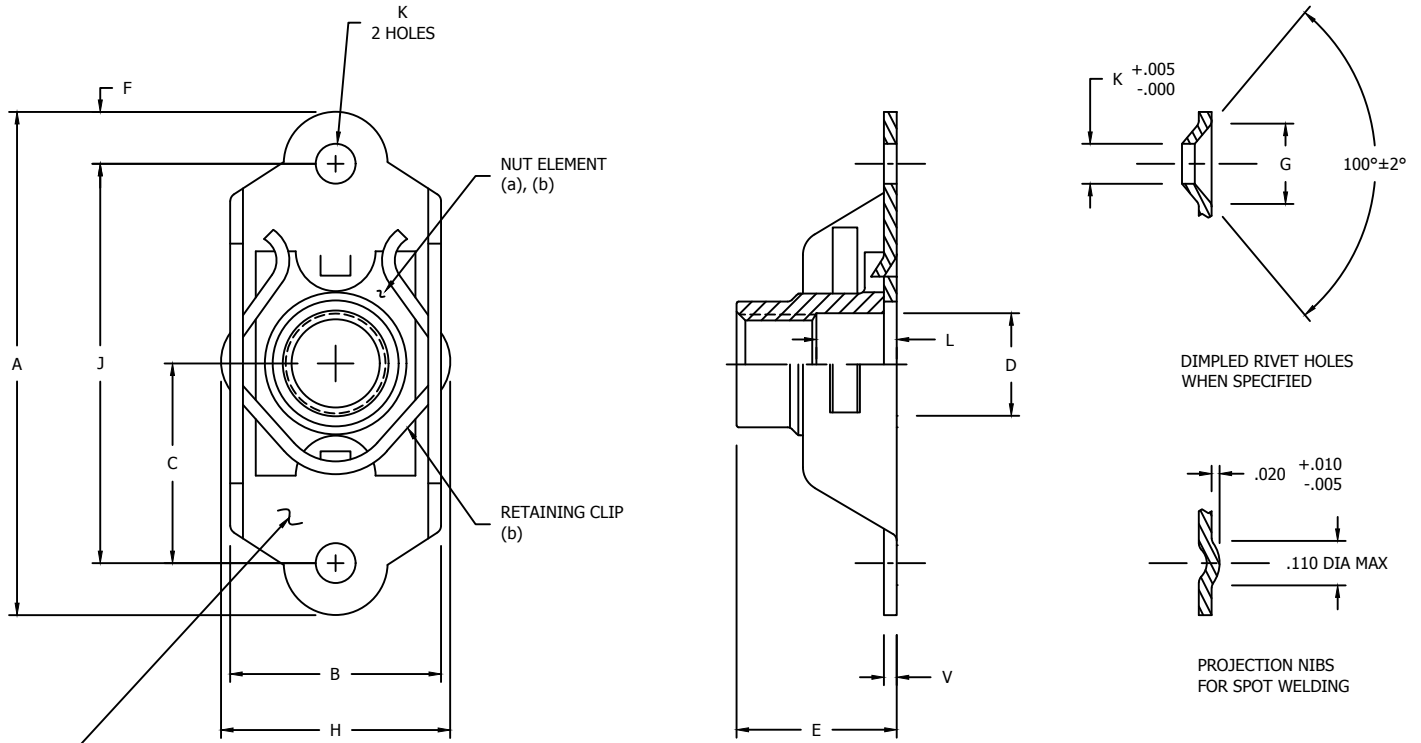




NUT, SELF-LOCKING, TWO-LUG, PLATE, FLOATING, VARIABLE C'BORE, REPLACEABLE NUT ELEMENT



MARK RETAINER WITH "N" NAFCO IDENTIFICATION, AND WITH "C" FOR CRES MATERIAL, DEPRESSED .010 INCH MAXIMUM. LOCATION OPTIONAL. MUST BE VISIBLE AFTER ASSEMBLY.

TABLE I - DIMENSIONS AND DASH NUMBERS

DASH NUMBER			THREAD (REF) (AS8879)	A MAX	B MAX	C $\pm .005$	$\varnothing D$ (REF)	E MAX (REF)	F MIN	$\varnothing G$ $\pm .010$	H MAX	J $\pm .002$	$\varnothing K$ + .005 - .000	L C'BORE MIN (REF)	V $\pm .005$	AXIAL TENSILE STRENGTH MIN LBS. (REF)	PUSH OUT MIN LBS.	TORQUE OUT MIN IN-LBS.	MAX WEIGHT LBS/100
INCONEL	STEEL	CRES																	
I-048-1	A-048-1	C-048-1						.295						.070					1.07
I-048-2	A-048-2	C-048-2						.357						.125					1.17
I-048-3	A-048-3	C-048-3						.419						.188					1.26
I-048-4	A-048-4	C-048-4						.481						.250					1.34
I-048-5	A-048-5	C-048-5						.543						.313					1.44
I-048-6	A-048-6	C-048-6						.605						.375					1.52
I-048-7	A-048-7	C-048-7						.667						.438					1.62
I-048-8	A-048-8	C-048-8						.729	.125	.200	.584	1.000	.098	.500	.032	5,060	225	160	1.72
I-048-9	A-048-9	C-048-9	.2500-28	1.292	.547	.500	.254	.791						.563					1.82
I-048-10	A-048-10	C-048-10						.853						.625					1.92
I-048-11	A-048-11	C-048-11						.915						.688					2.02
I-048-12	A-048-12	C-048-12						.977						.750					2.12
I-048-13	A-048-13	C-048-13						1.039						.813					2.22
I-048-14	A-048-14	C-048-14						1.101						.875					2.32
I-048-15	A-048-15	C-048-15						1.163						.938					2.42
I-048-16	A-048-16	C-048-16						1.225						1.000					2.52

- (a) FLOAT OF NUT ELEMENT SHALL NOT BE LESS THAN .030 RADIALLY FROM CENTERED POSITION. NUT ELEMENT SHALL BE CAPABLE OF ENGAGEMENT WITH A BOLT IN THE MAXIMUM MISALIGNED POSITION.
- (b) NUT PLATE RETAINERS SHALL PROVIDE FOR INTERCHANGEABLE AND REPLACEABLE NAS1794 OR NA2347 NUT ELEMENTS AND NAS1795 RETAINING CLIPS.

CONFORMS TO:
NASM25027
NAS3350, CLASS 1
AS8879

NAFCO USA, LLC
CARSON CITY, NV 89706

PART NUMBER
NA2348
FSC / CAGE CODE: 32387