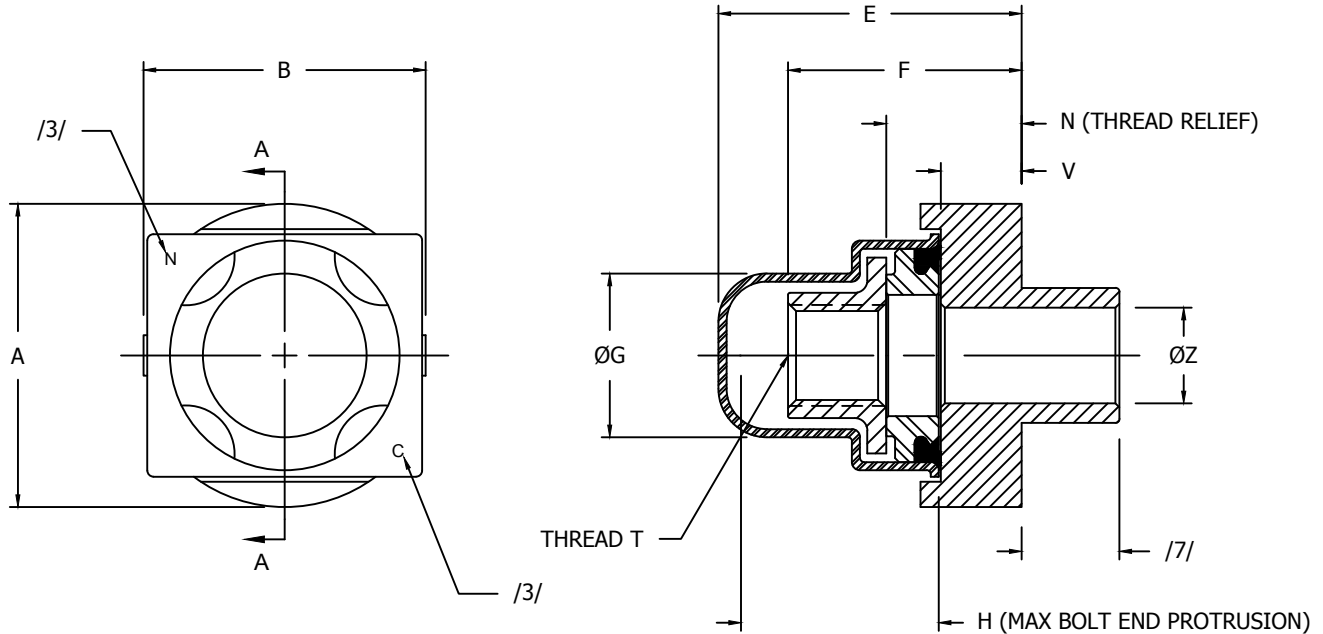




NUT-DOME, SEALED, MINI, SELF-LOCKING, STRESS-RELIEVING, FLOATING, RIVETLESS, 900MPa



SECTION A - A

TABLE I - DIMENSIONS AND PART NUMBERS

NAFCO PART NUMBER	T THREAD	A MAX	B MAX	E MAX	F MAX	ØG MAX	H MAX	N MIN	V ±0,25	ØZ MIN /13/			
NA2455-03M	MJ3 X 0,5 - 4H6H	20,0	18,0	15,4	10,65	9,0	13,7	6,9	5,0	5,1			
NA2455-04M	MJ4 X 0,7 - 4H6H				11,85								
NA2455-05M	MJ5 X 0,8 - 4H6H			19,4	13,95						10,6	17,5	7,8
NA2455-06M	MJ6 X 1,0 - 4H5H												

MATERIAL:

- NUT -- CARBON OR ALLOY STEEL PER NASM25027.
CRES A-286 (UNS S66286) PER AMS5525, AMS5731, AMS5732, AMS5734 OR AMS5737.
- SHELL -- CARBON STEEL PER NASM25027.
CRES A-286 (UNS S66286) PER AMS5525.
- WASHER -- ALUMINUM ALLOY OR STEEL PER NASM25027.
CRES A-286 (UNS S66286) PER AMS5731, AMS5732, AMS5734 OR AMS5737.
- SEAL -- 120°C: RUBBER PER MIL-PRF-6855, CLASS I, GRADE 60, DUROMETER A60, COLOR BLACK.
175°C: FLUOROSILICONE RUBBER PER MIL-DTL-25988, TYPE II, CLASS 1, DUROMETER A70, COLOR BLUE.
230°C: SILICONE RUBBER PER AMS3304, DUROMETER A70, COLOR RED.
- RETAINER -- TITANIUM 6AL4V (UNS R56400) PER AMS4911.
17-4 PH (H1025, UNS S17400) PER AMS5643.

CONFORMS TO:
NASM25027
AS8879

NAFCO USA, LLC

CARSON CITY, NV 89706

PART NUMBER

NA2455

FEDERAL SUPPLY CODE: 32387