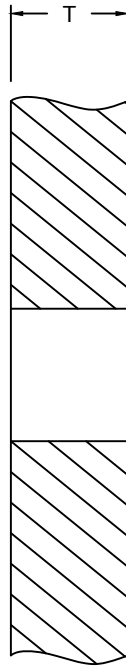
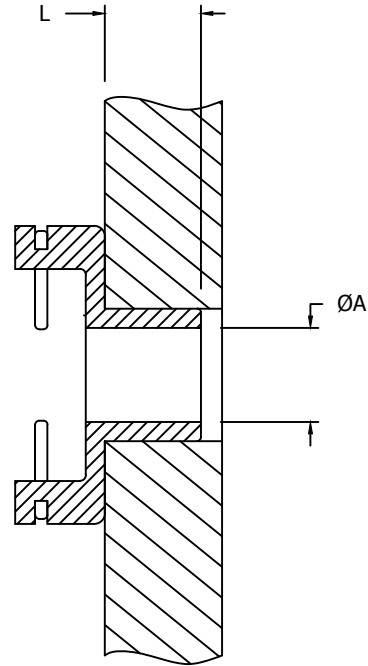




RETAINER, NUT - RIVETLESS,  
COMPOSITE APPLICATION



PRE-INSTALLATION



POST-INSTALLATION

TOTAL THICKNESS OF THE COMPOSITE INSTALLATION (in) = T

FIGURE 2

CONFORMS TO:  
NASM25027  
AS8879

**NAFCO USA, LLC**

CARSON CITY, NV 89706

PART NUMBER

**NA2480**

FEDERAL SUPPLY CODE: 32387