



# DOME NUT -- TWO-LUG, SELF-SEALING, SELF-LOCKING, FLOATING NUT ELEMENT

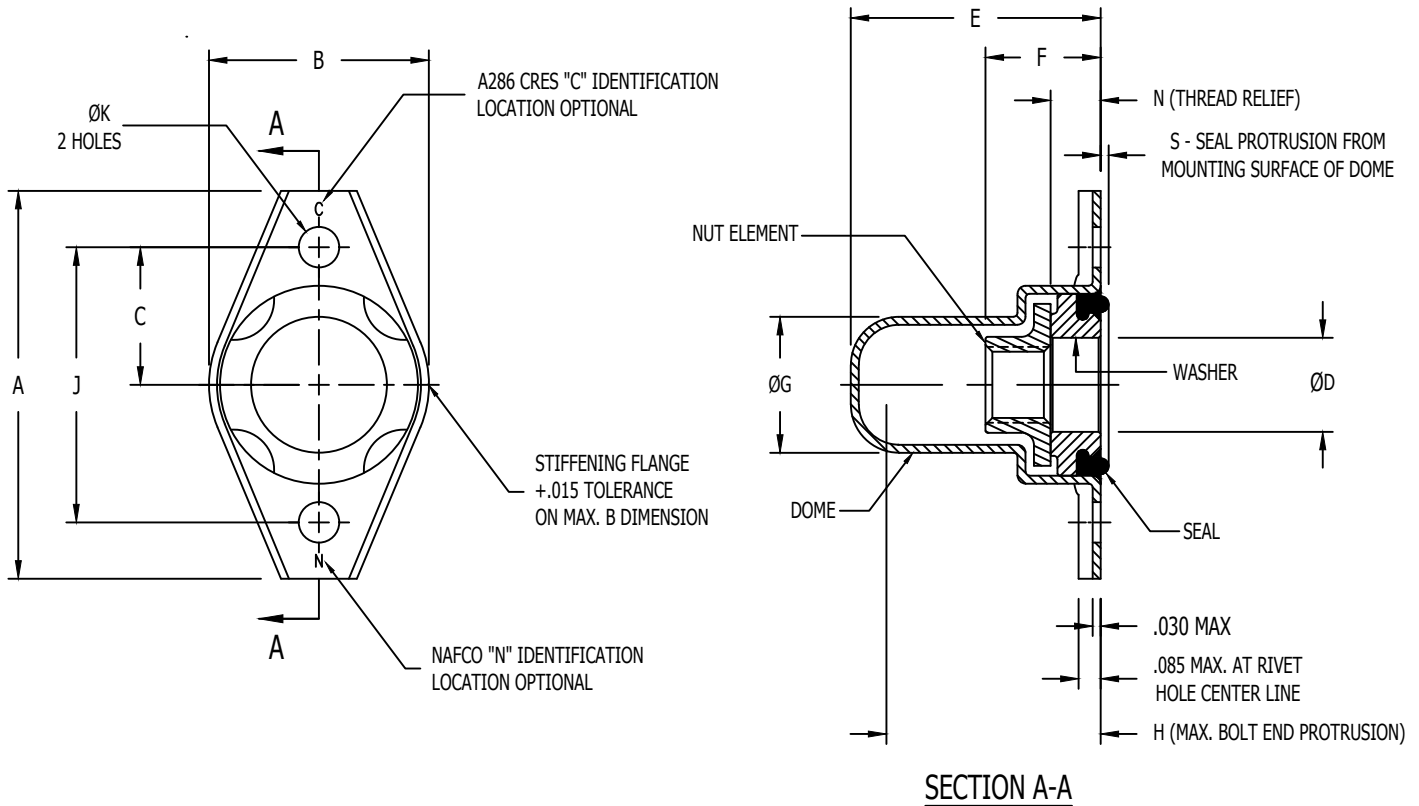


TABLE I - DIMENSIONS AND DASH NUMBERS

NAFCO PART NUMBER	THREAD (AS8879)	A MAX	B MAX	C ±.005	ØD MIN	E MAX	F MAX	ØG MAX	H MAX	J ±.002	ØK +.005 -0.000	N MIN	S REF.	APPROX. WT. LBS./100
NA2181-82	.1640-32 UNJC-3B	.989	.568	.344	.229	.640	.313	.352	.568	.688	.098	.125	.020	.92
NA2181-02	.1900-32 UNJF-3B				.289									.755
NA2181-048	.2500-28 UNJF-3B	1.296	.668	.500	.351	.823	.410	.520	.728	1.000	.130	.135	.025	1.95
NA2181-054	.3125-24 UNJF-3B				.351									.823

**MATERIAL:**

NUT -- CARBON OR ALLOY STEEL, A286 CRES PER AMS5525 OR AMS5732.  
 DOME -- CARBON STEEL GRADE C1050 PER AMS5085. A286 CRES PER AMS5525.  
 WASHER -- ALUMINUM ALLOY OR ALLOY STEEL. A286 CRES PER AMS5732.  
 SEAL -- 225°F: RUBBER, MIL-PRF-6855, CLASS I, GRADE 60, DUROMETER A60, COLOR BLACK.  
 350°F: FLUOROSILICONE RUBBER, MIL-DTL-25988, TYPE II, CLASS I, DUROMETER A70, COLOR BLUE.  
 450°F: SILICONE RUBBER, AMS3304, DUROMETER A70, COLOR RED.

**FINISH:**

A CODE -- STEEL NUT AND DOME WITH ALUMINUM ALLOY OR STEEL WASHER. FUEL RESISTANT MIL-PRF-6855 SEAL (225°F).  
 STEEL NUT, DOME AND WASHER CAD PLATE PER AMS-QQ-P-416, TYPE II, CLASS 2. ALUMINUM WASHER ALODINE PER MIL-C-5541. NUT DRY-FILM LUBRICANT PER ASS272 OVER CAD PLATE.  
 S CODE -- STEEL NUT, DOME AND WASHER. FUEL RESISTANT MIL-DTL-25988 SEAL (350°F).  
 STEEL NUT, DOME AND WASHER CAD PLATE PER AMS-QQ-P-416, TYPE II, CLASS 2. NUT DRY-FILM LUBRICANT PER ASS272 OVER CAD PLATE.  
 X CODE -- SAME AS "A" CODE WITHOUT DRY-FILM LUBRICANT.  
 Y CODE -- SAME AS "S" CODE WITHOUT DRY-FILM LUBRICANT.  
 C CODE -- A286 CRES NUT, DOME AND WASHER PASSIVATE PER AMS2700. NUT SILVER PLATE PER AMS2410. NON-FUEL RESISTANT AMS3304 SEAL (450°F).  
 F CODE -- A286 CRES NUT, DOME AND WASHER PASSIVATE PER AMS2700. NUT DRY-FILM LUBRICANT PER ASS272. FUEL RESISTANT MIL-DTL-25988 SEAL (350°F).  
 R CODE -- A286 CRES NUT, DOME AND WASHER PASSIVATE PER AMS2700. NUT DRY-FILM LUBRICANT PER ASS272. FUEL RESISTANT MIL-PRF-6855 SEAL (225°F).

CONFORMS TO:  
 NASM25027  
 AS8879  
 NAS1473

**NAFCO USA, LLC**  
 CARSON CITY, NV 89706

PART NUMBER  
**NA2181**  
 FEDERAL SUPPLY CODE: 32387