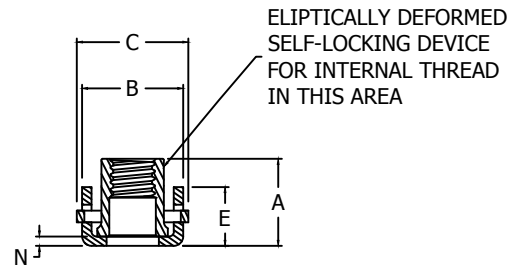
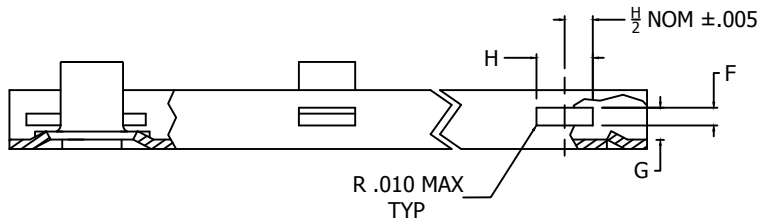
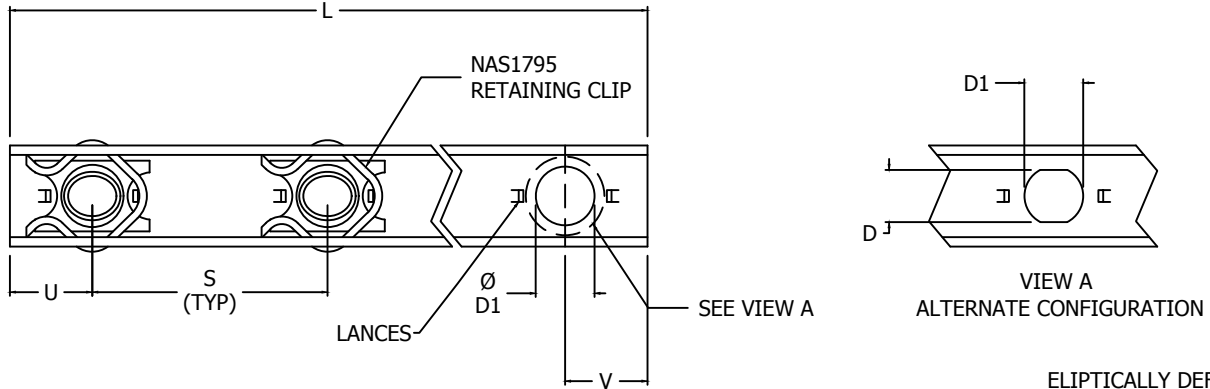




NUT, GANG CHANNEL



FOR -18
SIZE ONLY

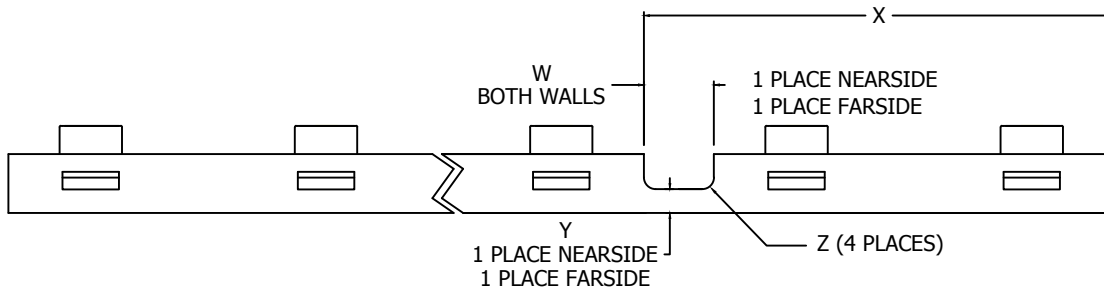


TABLE I - DIMENSIONS AND DASH NUMBERS

	NAFCO PART NUMBER	THREAD (AS8879)	A MAX	B MAX	C REF	D ±0.005	D1 ±0.010	E MAX	F ±0.005	G ±0.010	H ±0.005	L REF	N REF	S ±0.010	U	V	W	X	Y	Z R MAX	NUMBER OF NUTS
△ D	NA2399-048-1	.2500-28 UNJF-3B	0.298	0.552	0.574	0.285	0.320	0.298	0.085	0.140	0.220	17.44	0.040	1.750	.843	.843	---	---	---	---	10
△ E	NA2399-048-2														.843	.843	---	---	---	---	25
△ F	NA2399-048-3														.843	.700	---	---	---	---	9
△ G	NA2399-048-4														.843	.843	---	---	---	---	14
△ C	NA2399-048-5														.700	.700	---	---	---	---	12
△ H	NA2399-048-6														.750	.750	---	---	---	---	13
△ J	NA2399-048-7														.843	.843	---	---	---	---	4
△ D	NA2399-048-8														.843	.843	---	---	---	---	12
△ E	NA2399-048-9														.843	.843	---	---	---	---	10
△ F	NA2399-048-10														.843	.843	---	---	---	---	25
△ G	NA2399-048-11														.843	.700	---	---	---	---	9
△ C	NA2399-048-12														.843	.843	---	---	---	---	14
△ H	NA2399-048-13														.700	.700	---	---	---	---	12
△ J	NA2399-048-14														.750	.750	---	---	---	---	13
△ J	NA2399-048-15														.843	.843	---	---	---	---	4
△ H	NA2399-048-16														.843	.843	---	---	---	---	12
△ H	NA2399-048-17														.843	.400	---	---	---	---	11
△ H	NA2399-048-18														.750	.750	.50	3.65	.090	.06	13

CONFORMS TO:
NASM25027
AS8879

NAFCO USA, LLC
CARSON CITY, NV 89706

PART NUMBER
NA2399

FSCM / CAGE CODE: 32387