



NUT, ANCHOR, ONE LUG, SELF-LOCKING, FLOATING, CAPPED, 125,000 PSI

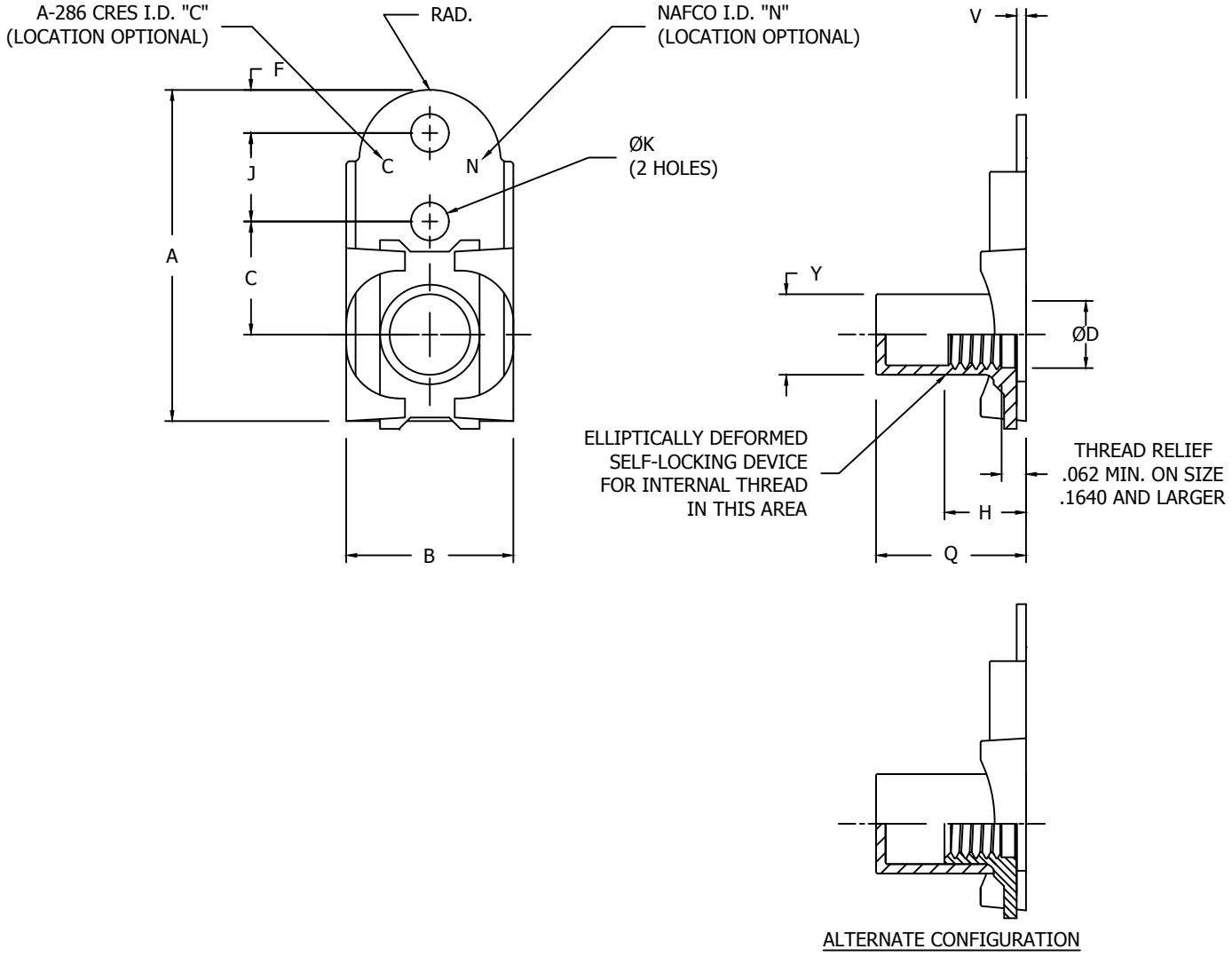


TABLE I - DIMENSIONS AND DASH NUMBERS

NAFCO PART NUMBER		THREAD AS8879	A MAX	B MAX	C ±.005	ØD MIN	F MIN	H MAX	J ±.002	ØK +.005 -.000	Q +.020 -.010	V MAX	Y MAX	APPROX. WT. LBS./100
STEEL 450°F	CRES 800°F													
NA2144-62K	NA2144C-62K	.1380-32 UNJC-3B	1.025	.416	.344	---	.100	.171	.312	.098	.518	.032	.238	.57
NA2144-62K1	NA2144C-62K1													.377
NA2144-82K	NA2144C-82K	.1640-32 UNJC-3B	1.025	.416	.344	.168	.100	.250	.312	.098	.518	.032	.262	.60
NA2144-82K1	NA2144C-82K1													.377
NA2144-02K	NA2144C-02K	.1900-32 UNJF-3B	1.025	.416	.344	.194	.100	.250	.312	.098	.518	.032	.290	.61
NA2144-02K1	NA2144C-02K1													.377
NA2144-048K	NA2144C-048K	.2500-28 UNJF-3B	1.300	.516	.500	.254	.100	.281	.312	.098	.549	.032	.357	1.22
NA2144-048K1	NA2144C-048K1													.440

CONFORMS TO:
NASM25027
AS8879

NAFCO USA, LLC
CARSON CITY, NV 89706

PART NUMBER
NA2144
FSC/CAGE CODE: 32387