



CLINCHNUT SELF-LOCKING

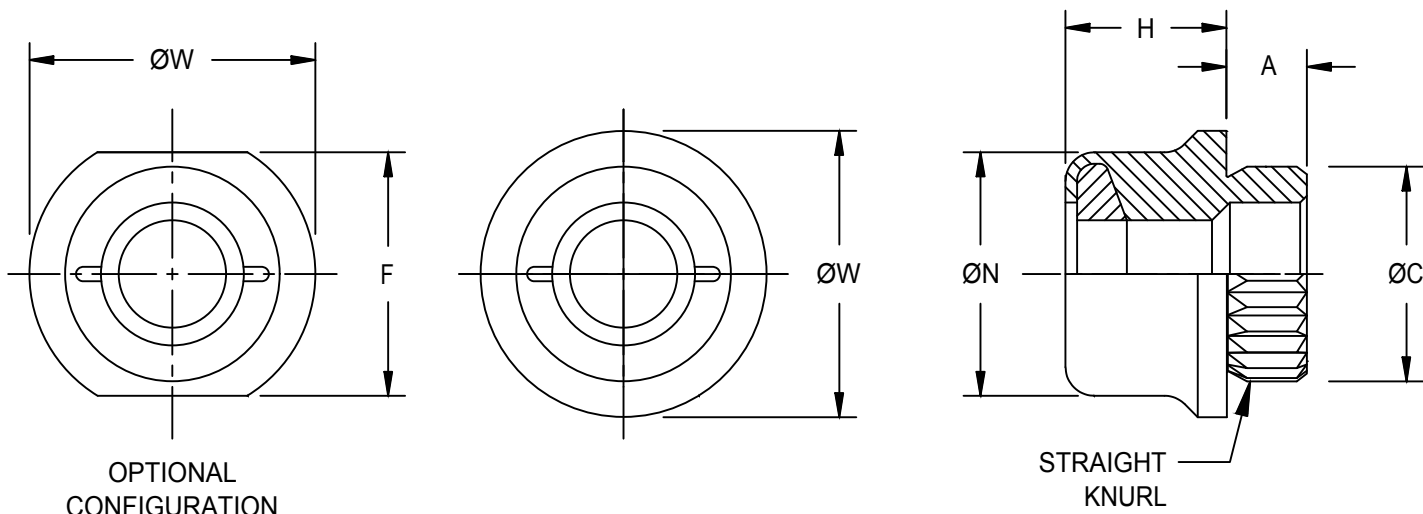


FIGURE 1 – NUT, SELF-LOCKING, CLINCH, (SWAGE-CLINCHING, KNURLED SHANK, MINIATURE, 250 °F)

TABLE I - DIMENSIONS AND DASH NUMBERS

NAFCO PART NUMBER	THREAD (AS8879)	A ±.003	ØC ±.002	H ±.010	ØN MAX	ØW ±.010	F ±.015
NA2311-26-1	.0860-56 UNJC-3B	.040	.129	.075	.150	.172	.156
NA2311-26-2		.060					
NA2311-40-1	.1120-40 UNJC-3B	.040	.160	.090	.182	.203	.187
NA2311-40-2		.060					
NA2311-62-1	.1380-32 UNJC-3B	.040	.192	.130	.242	.281	.238
NA2311-62-2		.060					
NA2311-82-2	.1640-32 UNJC-3B	.060	.223	.160	.268	.312	.281
NA2311-02-2	.1900-32 UNJF-3B	.060	.254	.179	.287	.344	.328

MATERIAL: NO CODE -- CARBON STEEL, GRADE 1012 (UNS G10120) IN ACCORDANCE WITH ASTM A 510, OR GRADE 1018 (UNS G10180) WITH LEAD FOR FREE MACHINING, IN ACCORDANCE WITH ASTM A 108 FOR THREAD SIZES .0860 AND .1120. ALLOY STEEL GRADE 4130 (UNS G41300) IN ACCORDANCE WITH ASTM A 322 OR ASTM A 108 FOR THREAD SIZES .1380-32 UNJC-3B AND LARGER.
 "S" CODE -- CRES, TYPE 303 PER AMS5640, TYPE I OR TYPE II.
 "C" CODE -- A286 CORROSION RESISTANT STEEL PER AMS5731, AMS5732, AMS5734 OR AMS5737.
 LOCKING INSERT -- NYLON.

FINISH: NO CODE -- CADMIUM PLATED PER AMS-QQ-P-416, TYPE II, CLASS 3.
 "S" CODE -- PASSIVATE IN ACCORDANCE WITH AMS2700, METHOD 1, TYPE II, CLASS 4.
 "C" CODE -- PASSIVATE IN ACCORDANCE WITH AMS2700.

SERVICE TEMP.: NO CODE -- TO 250°F.
 "S" CODE -- TO 250°F.
 "C" CODE -- TO 250°F.

CONFORMS TO:
 NASM25027
 AS8879
 NASM45938

NAFCO USA, LLC
 CARSON CITY, NV 89706

PART NUMBER
NA2311
 FEDERAL SUPPLY CODE: 32387