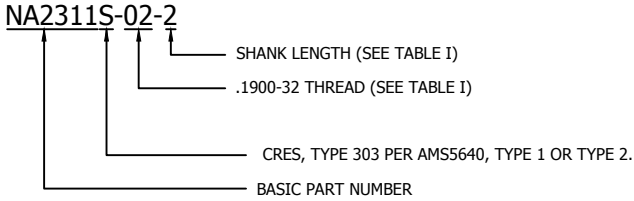


CLINCHNUT SELF-LOCKING

APPLICATION: A PRESS-IN NUT FOR USE IN THIN ALUMINUM AND MAGNESIUM SHEETS, GRAPHITE COMPOSITE AND FIBER-REINFORCED PLASTIC SHEETS, PRINTED CIRCUIT BOARDS, ETC.

EXAMPLE CALLOUT:



- NOTES:**
1. PUSH-OUT AND TORQUE-OUT VALUES ARE SPECIFIED IN TABLE II WHEN PROPERLY INSTALLED IN LOW CARBON STEEL SHEET.
 2. DIMENSIONS ARE IN INCHES AND APPLY AFTER FINISH UNLESS OTHERWISE SPECIFIED.
 3. REFERENCED DOCUMENTS SHALL BE THE ISSUE IN EFFECT ON THE DATE OF INVITATIONS FOR BID.
 4. FOR OTHER FINISHES AND MATERIALS CONTACT NAFCO USA, LLC.

HOLE PREPARATION

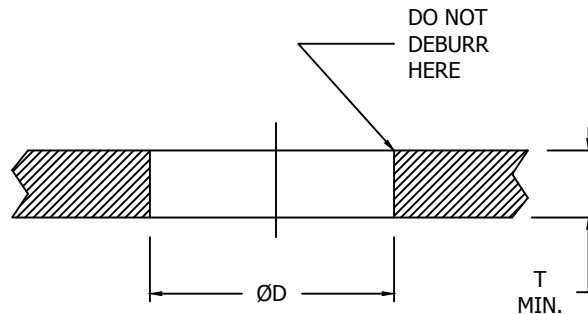


TABLE II - PERFORMANCE AND INSTALLATION DATA

NAFCO PART NUMBER	THREAD (AS8879)	ØD ±.001	T SHEET THICKNESS	APPROX INSTALL FORCE LBF	PUSH-OUT LBF MIN	TORQUE-OUT LBF-IN MIN
NA2311-26-1	.0860-56 UNJC-3B	.125	.030 - .045	300	20	5
NA2311-26-2			.046 AND UP			
NA2311-40-1	.1120-40 UNJC-3B	.156	.030 - .045	600	40	5
NA2311-40-2			.046 AND UP			
NA2311-62-1	.1380-32 UNJC-3B	.188	.030 - .045	750	60	8
NA2311-62-2			.046 AND UP			
NA2311-82-2	.1640-32 UNJC-3B	.219	.046 AND UP	1,000	80	12
NA2311-02-2	.1900-32 UNJF-3B	.250	.046 AND UP	1,500	100	15

CONFORMS TO:
NASM25027
AS8879
NASM45938

NAFCO USA, LLC
CARSON CITY, NV 89706

PART NUMBER
NA2311
FEDERAL SUPPLY CODE: 32387