



NUT, PLATE, SELF-LOCKING, LOW HEIGHT, FIXED, TWO LUG, CRES, REDUCED RIVET SPACING

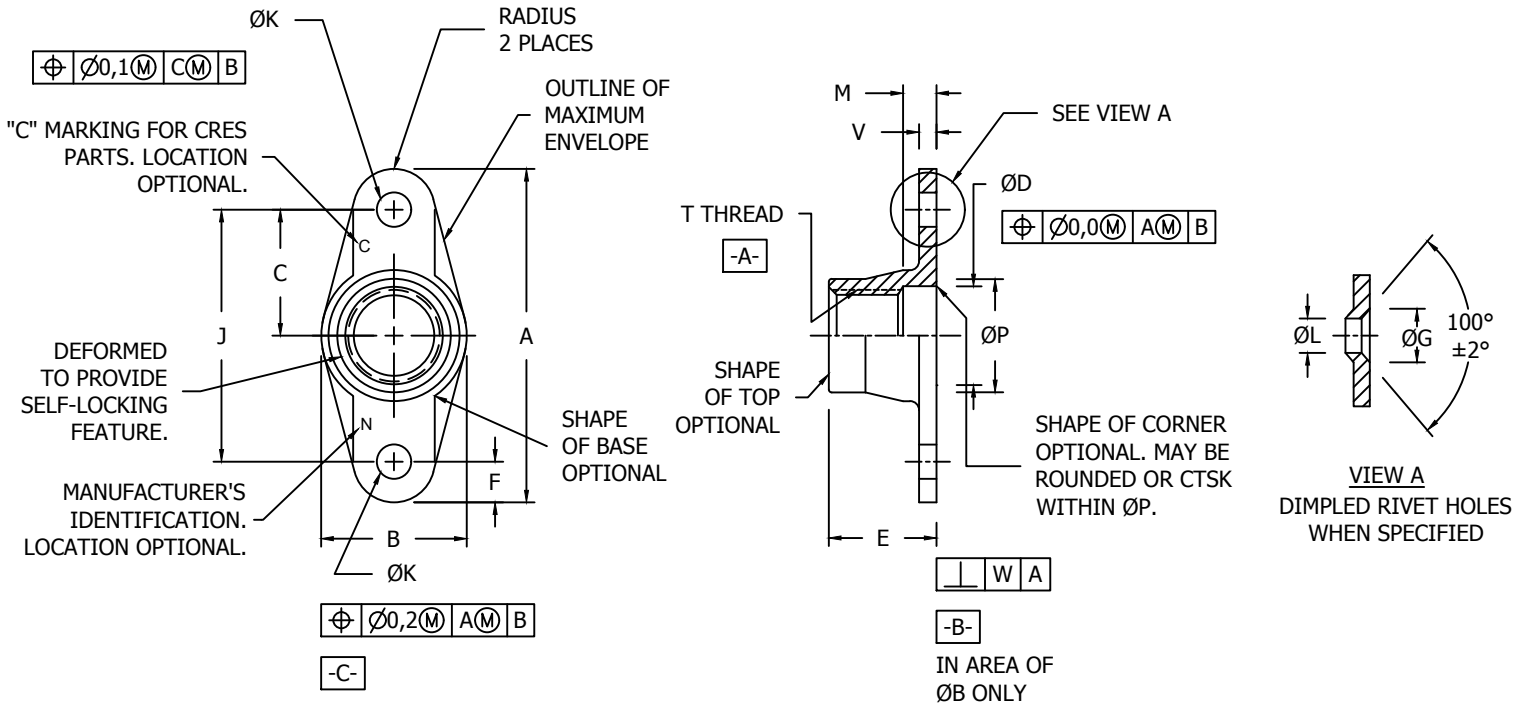


TABLE I - DIMENSIONS /4/

DASH NUMBER	T THREAD /2/	A MAX	ØB MAX	C BASIC	ØD C'BORE MIN	E MAX /1/	F MIN	ØG ±0,25	J BASIC	ØK +0,2 0	ØL +0,4 0	M C'BORE MIN	ØP MAX	V MAX	W TOL MAX
4M	MJ4 x 0,7 - 4H6H	17,6	8,0	6,0	4,4	5,8	2,6	5,0	12,0	2,5	2,5	2,0	6,3	1,00	0,15
5M	MJ5 x 0,8 - 4H6H	19,6	9,0	7,0	5,5	6,9	2,6	5,0	14,0	2,5	2,5	2,0	7,3	1,00	0,15
6M	MJ6 x 1 - 4H5H	22,8	10,0	8,0	6,5	8,1	3,1	5,0	16,0	2,5	2,5	2,0	8,7	1,25	0,15

MATERIAL: A286 (UNS S66286) PER AMS5525, AMS5732, OR AMS5737.

FINISH: FOR 425°C, SILVER PLATE ON THREAD AREA PER AMS2410. THREADS SHALL SHOW COMPLETE COVERAGE. SILVER PLATING ON ALL OTHER SURFACES IS OPTIONAL. PASSIVATE PER AMS2700, METHOD 1, CLASS 4, TYPE 2 OR 8.

LUBRICANT: SOLID FILM LUBRICANT PER AS5272, TYPE I, II OR III. NICKEL AND/OR COPPER STRIKE AS A PRETREATMENT FOR APPLICATION OF SOLID FILM LUBRICANT IS OPTIONAL.

CONFORMS TO:

NA0044

NAFCO USA, LLC

CARSON CITY, NV 89706

PART NUMBER

NA2454

FSCM / CAGE CODE: 32387