



CLINCHNUT
SELF-LOCKING

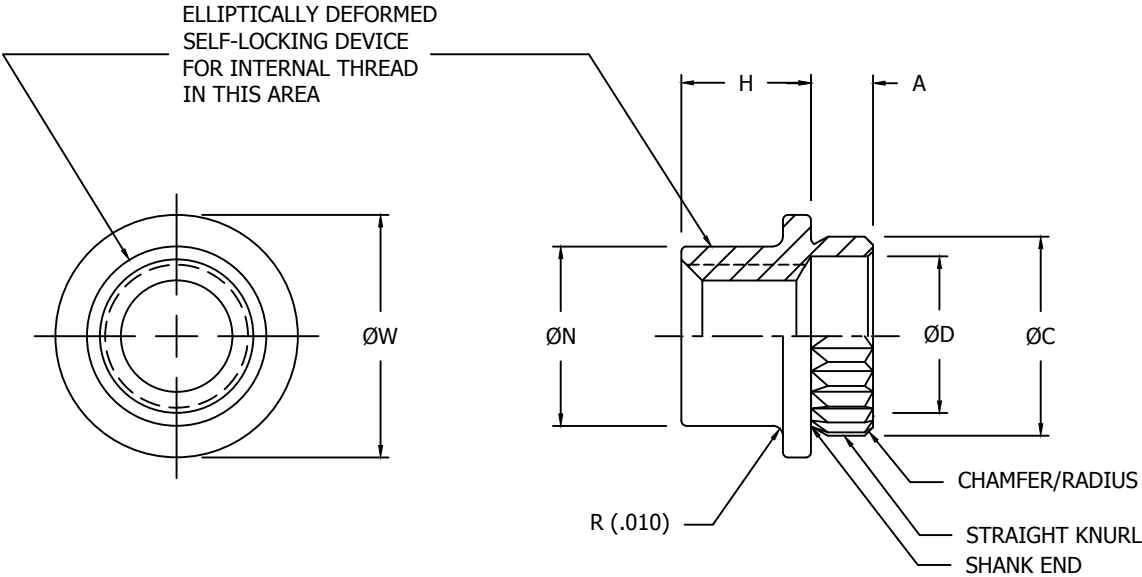


TABLE I - DIMENSIONS AND DASH NUMBERS

NAFCO PART NUMBER	THREAD (AS8879)	A $\pm .003$	$\varnothing C$ $\pm .002$	$\varnothing D$ $+ .005$ $- .000$	H $\pm .010$	$\varnothing N$ MAX	$\varnothing W$ $\pm .010$	APPROX. WT. LB/100
NA2168-26-1	.0860-56 UNJC-3B	.040	.129	.096	.085	.118	.156	.03
NA2168-26-2		.060						.03
NA2168-40-1	.1120-40 UNJC-3B	.040	.160	.128	.112	.154	.203	.05
NA2168-40-2		.060						.05
NA2168-62-1	.1380-32 UNJC-3B	.040	.192	.152	.120	.182	.234	.08
NA2168-62-2		.060						.08
NA2168-82-1	.1640-32 UNJC-3B	.040	.223	.178	.120	.207	.281	.09
NA2168-82-2		.060						.09
NA2168-02-1	.1900-32 UNJF-3B	.040	.254	.210	.120	.231	.328	.15
NA2168-02-2		.060						.16
NA2168-048-1	.2500-28 UNJF-3B	.040	.316	.255	.214	.306	.391	.27
NA2168-048-2		.060						.28

MATERIAL: NO CODE -- CARBON STEEL, GRADE 1018 PER ASTM A510/A510M, FOR SIZES .0860 AND .1120.
ALLOY STEEL GRADE 4130 PER ASTM A322.
"S" CODE -- CRES, TYPE 303 PER AMS5640, TYPE 1 OR TYPE 2.
"C" CODE -- A286 CORROSION RESISTANT STEEL PER AMS5731, AMS5732, AMS5734 OR AMS5737.
"A" CODE -- ALLOY STEEL OPTION FOR SIZES .0860 AND .1120 - ALLOY STEEL GRADE 4130 PER ASTM A322.

FINISH: NO CODE -- CADMIUM PLATED PER AMS-QQ-P-416, TYPE II, CLASS 3. NAFCO MOLYBDENUM DISULFIDE LUBRICANT OPTIONAL IF NUTS MEET THE SALT SPRAY REQUIREMENTS OF AMS-QQ-P-416, TYPE II.
"S" CODE -- PASSIVATE PER AMS2700, METHOD 1, CLASS 4. NAFCO MOLYBDENUM DISULFIDE LUBRICANT OPTIONAL.
"C" CODE -- PASSIVATE PER AMS2700, METHOD 1, CLASS 4 OR SILVER PLATE PER AMS2410.
NAFCO MOLYBDENUM DISULFIDE LUBRICANT OPTIONAL.
"A" CODE -- CADMIUM PLATED PER AMS-QQ-P-416, TYPE II, CLASS 3. NAFCO MOLYBDENUM DISULFIDE LUBRICANT OPTIONAL IF NUTS MEET THE SALT SPRAY REQUIREMENTS OF AMS-QQ-P-416, TYPE II.

SERVICE TEMP.: NO CODE -- TO 450°F.
"S" CODE -- TO 450°F.
"C" CODE -- SILVER PLATED -- TO 800°F.
NON-SILVER PLATED -- TO 450°F.
"A" CODE -- TO 450°F.

CONFORMS TO:
NASM25027
AS8879

NAFCO USA, LLC
CARSON CITY, NV 89706

PART NUMBER
NA2168
FEDERAL SUPPLY CODE: 32387